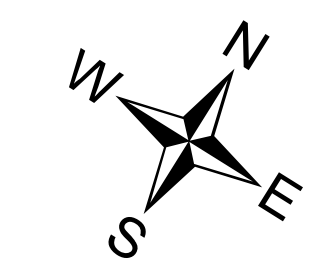
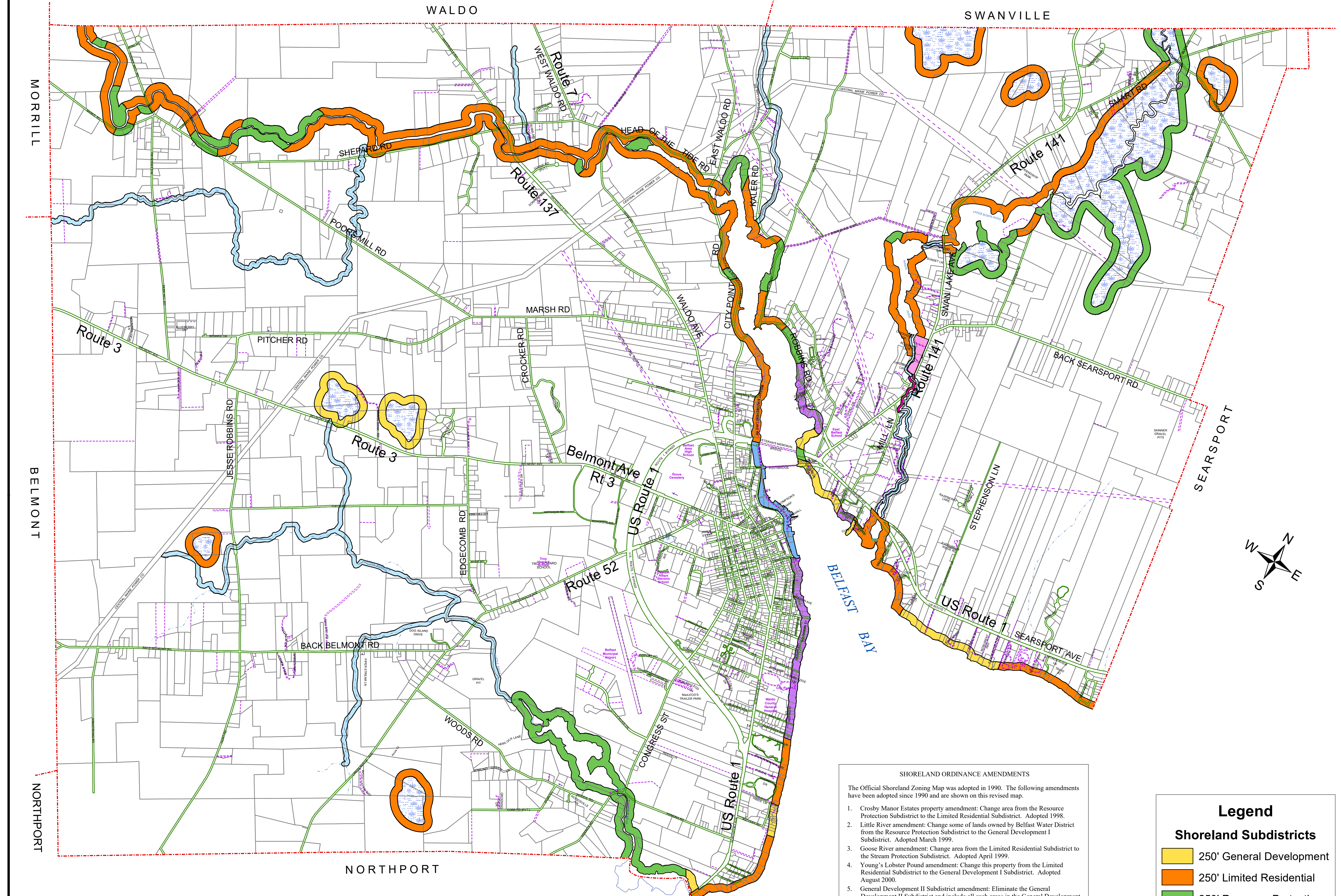


SHORELAND ZONING MAP




- SHORELAND ORDINANCE AMENDMENTS**
- The Official Shoreland Zoning Map was adopted in 1990. The following amendments have been adopted since 1990 and are shown on this revised map.
1. Crosby Manor Estates property amendment: Change area from the Resource Protection Subdistrict to the Limited Residential Subdistrict. Adopted 1998.
 2. Little River amendment: Change some of lands owned by Belfast Water District from the Resource Protection Subdistrict to the General Development I Subdistrict. Adopted March 1999.
 3. Goose River amendment: Change area from the Limited Residential Subdistrict to the Stream Protection Subdistrict. Adopted April 1999.
 4. Young's Lobster Pound amendment: Change this property from the Limited Residential Subdistrict to the General Development I Subdistrict. Adopted August 2000.
 5. General Development II Subdistrict amendment: Eliminate the General Development II Subdistrict and include all such areas in the General Development I Subdistrict. Adopted August 2000.
 6. Fortier Street amendment: Change two properties located on Fortier Street from the Resource Protection Subdistrict to the Limited Residential Subdistrict. Adopted January 2002.
 7. Eliminate a wetland from shoreland regulation adjacent to Route 3 near the MBNA wetland preservation area. August 2003.
 8. Series of 9 amendments approved to shoreland areas near the Goose River, including the Robbins Road area. January 2004.
 9. Establish the Waterfront Development Shoreland District, and eliminate the Commercial Fisheries Maritime Shoreland District. July 2004.
 10. Goose River Amendment: Change area on northwesterly side of Searsport Avenue from the Resource Protection Subdistrict to Stream Protection Subdistrict. Amendment adopted September 5, 2017.
 11. Little River, Lower Reservoir Amendment: Change an area that is about .5 acre in size that is located westerly of the Belfast Water District Offices from the Resource Protection Subdistrict to the General Development Subdistrict. Amendment adopted October 16, 2018.

Legend

Shoreland Subdistricts

	250' General Development
	250' Limited Residential
	250' Resource Protection
	250' Urban Residential
	75' Stream Development
	75' Stream Protection
	Waterfront Subdistrict
	Mobile Home Community
	City Regulated Wetland

 **CITY OF BELFAST**
WALDO COUNTY, MAINE

1,000 500 0 1,000 2,000 3,000 4,000 5,000 6,000 Feet

Published October 16, 2018
 This map was prepared using the
 City of Belfast Geographic Information System.