



Office of the Town Clerk

Town of Chelmsford
50 Billerica Road
Chelmsford, MA 01824
978 250 5205
omaloney@townofchelmsford.us

Onorina Z. Maloney
Town Clerk

**CERTIFICATE OF VOTE
ARTICLE 14**

**Amend Chapter 11... increasing the total number of dogs that may be kept on a kennel premises from 25 to 100
2016 FALL Annual Town Meeting
Third and Final Session – Monday, October 24, 2016**

I, Onorina Z. Maloney, Town Clerk of Chelmsford, Massachusetts do hereby certify the following vote taken under Article 14 at the third and final session of the 2016 Fall Annual Town Meeting held at the Chelmsford Senior Center 75 Groton Road, Chelmsford, MA 01863. The meeting was called to order at 7:30 pm on Monday, October 24, 2016, by Moderator Jon H. Kurland. There were 120 members present which satisfied a quorum requirement of 82.

ARTICLE 14. To see if the Town will vote to amend Chapter 11, Section 4, Paragraph F of the Code of the Town of Chelmsford by increasing the total number of dogs that may be kept on a kennel premises from 25 to 100; or act in relation thereto.

MOTION UNDER ARTICLE 14. I move that the Town amend Chapter 11, Section 4, Paragraph F of the Code of the Town of Chelmsford by increasing the total number of dogs that may be kept on a kennel premises from 25 to 100 by deleting the number “25” in the first sentence of Paragraph F and inserting the number “100” in its place so that the first sentence of the Paragraph reads as follows:

“All kennels shall be limited to a total of 100 dogs to be maintained on said premises.”

SUBMITTED BY: Town Manager

Recommendations:

Board of Selectmen; unanimously recommends approval of Article 14

Finance Committee: unanimously recommends approval of Article 14

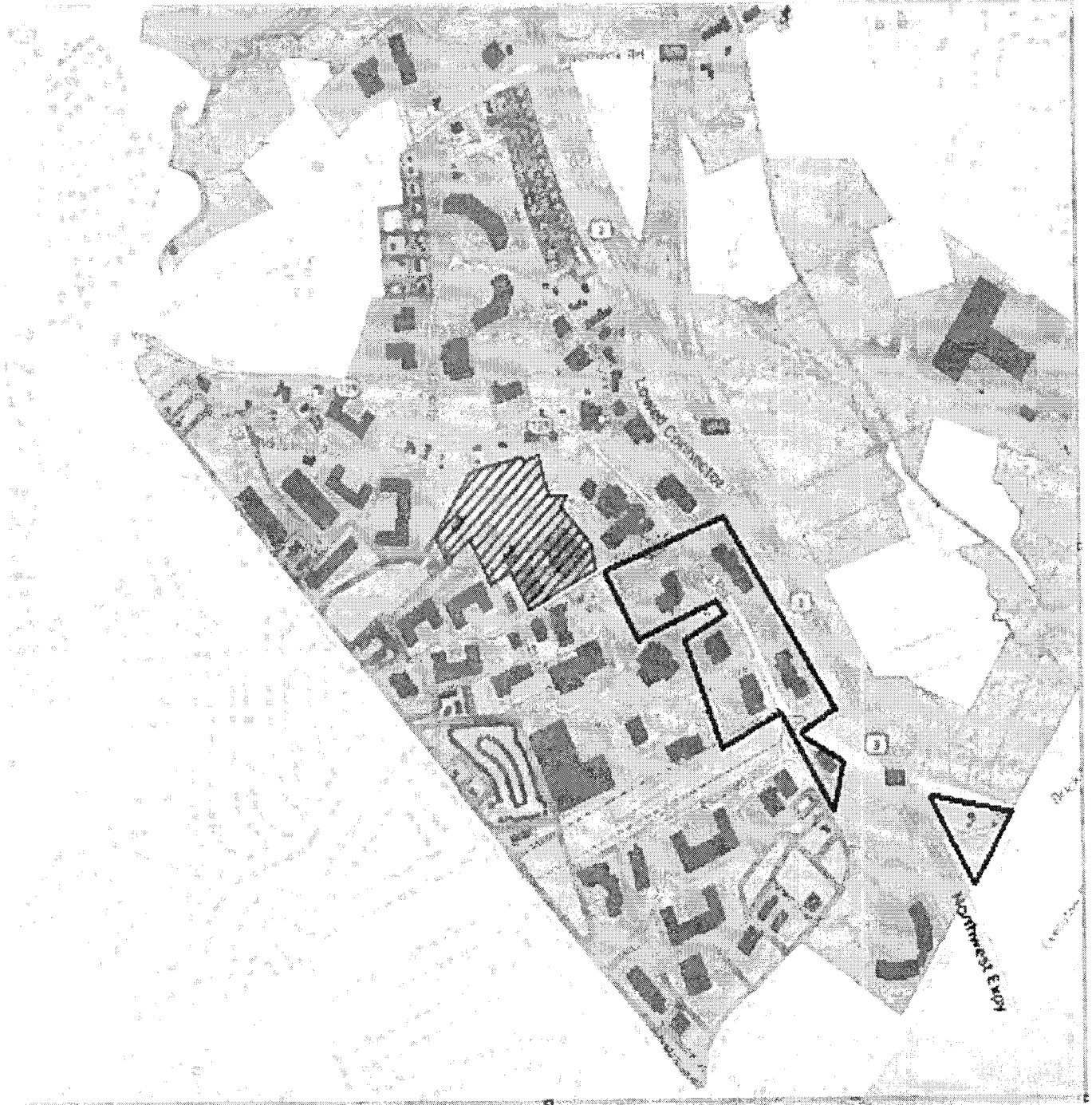
Electronic voting devices registered the following votes:

YES: 112 NO: 14 Abstentions 1

Motion under Article 14 carries

Onorina Z. Maloney

Rt. 129 Business Amenity Overlay District (BAOD) Map August 24, 2016



Black outlined area is the perimeter boundary of the overlay district

Orange outlined areas are "Commercial Exclusion Zones"

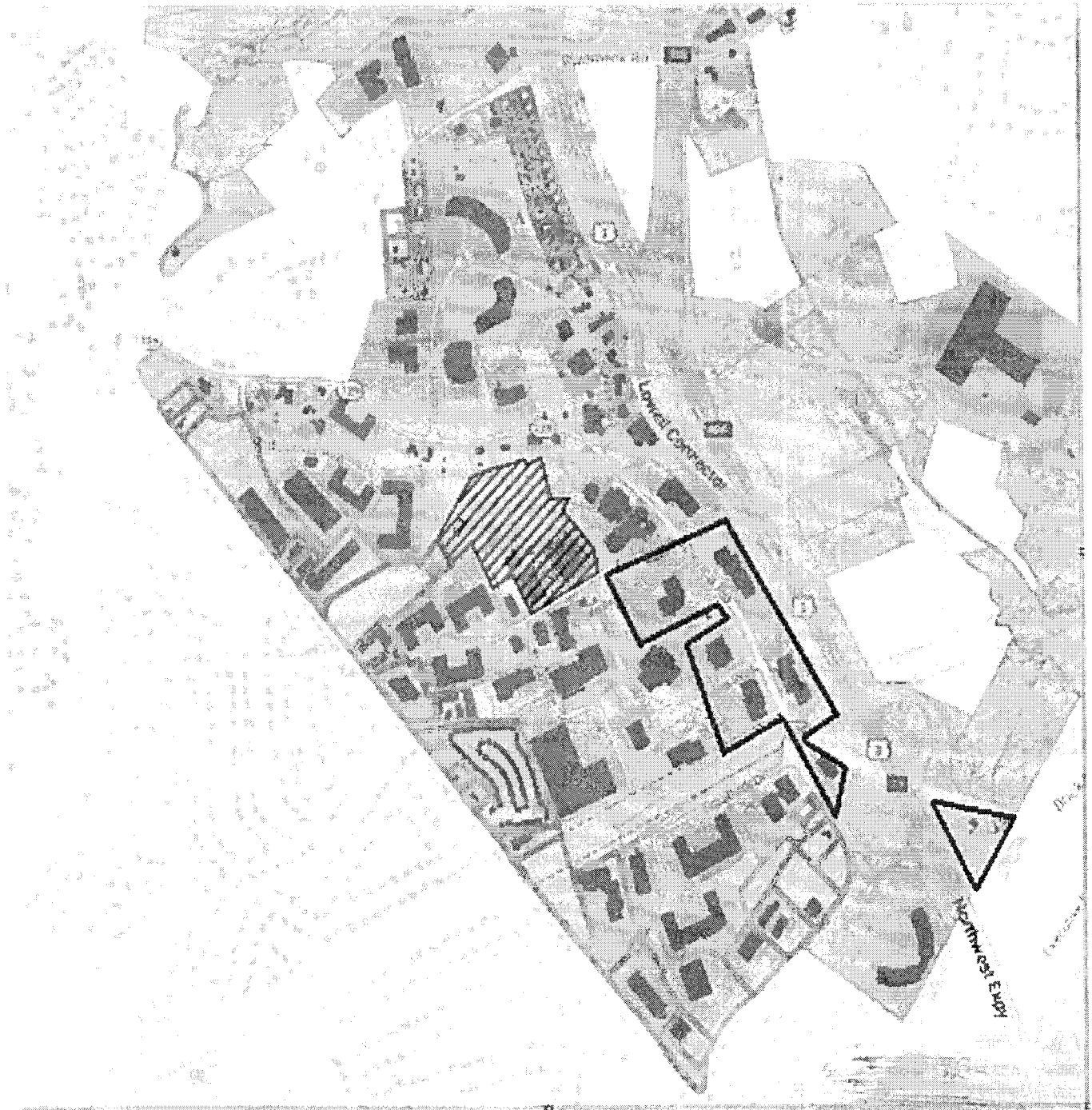
Red outlined areas are "Building Heights" per section 195-146.1

Perimeter boundary of the overlay district and Commercial Exclusion Zone follow property line boundaries.

TRUE COPY ATTEST:

[Signature]
TOWN CLERK - CHELMSFORD, MA

Rt. 129 Business Amenity Overlay District (BAOD) Map August 24, 2016



Black outlined area is the perimeter boundary of the overlay district

Orange outlined areas are "Commercial Exclusion Zones"

Red outlined areas are "Building Heights" per section 195-146.1

Perimeter boundary of the overlay district and Commercial Exclusion Zone follow property line boundaries.

A TRUE COPY ATTEST:

Resing M. H. H. H.
TOWN CLERK - CHELMSFORD, MA