

BILL NO. 3515

ORDINANCE NO. 3305

**AN ORDINANCE PERTAINING TO THE ACCEPTANCE OF PRESTIGE LANDING, LAKE MEADOW, WATERSIDE HEIGHTS, AND PORTIONS OF PATCHWORK FIELDS IN FIENUP FARMS AS PUBLIC STREETS IN THE CITY OF CHESTERFIELD**

WHEREAS, the City of Chesterfield has approved the construction of Fienup Farms; and

WHEREAS, the streets in Fienup Farms were intended to be public streets and were therefore constructed to the design standards of the Department of Public Works of the City of Chesterfield; and

WHEREAS, Prestige Custom Homes, Inc. have completed required street improvements in Plats 4 and 10 of Fienup Farms.

NOW, THEREFORE, BE IT ORDAINED BY THE CITY COUNCIL OF THE CITY OF CHESTERFIELD, AS FOLLOWS:

Section 1. The following streets are hereby accepted by the City of Chesterfield for future care and maintenance:

(1) Prestige Landing: Approximately 126 feet; from Fienup Farms Boulevard to the cul-de-sac of Prestige Landing  
Book 367 Pages 141-143

(2) Lake Meadow: Approximately 712 feet; from Fienup Farms Boulevard to Patchwork Fields  
Book 367 Pages 141-143

(3) Waterside Heights: Approximately 209 feet; from Fienup Farms Boulevard to the cul-de-sac of Waterside Heights  
368 Pages 13-15

(4) Patchwork Fields: Approximately 510 feet; from a point 172 feet north of Pine Summit Drive to a point 341 feet north of Lake Meadow  
Book 367 Pages 141-143

and

Approximately 455 feet; from a point 341 feet north of Lake Meadow to a point 37 feet south of Barn Owl Lane  
Book 368 Pages 13-15

Section 2. This Ordinance shall be in full force and effect from and after its passage and approval.

Passed and approved this 3<sup>rd</sup> day of September, 2024.

Bob Nations  
PRESIDING OFFICER

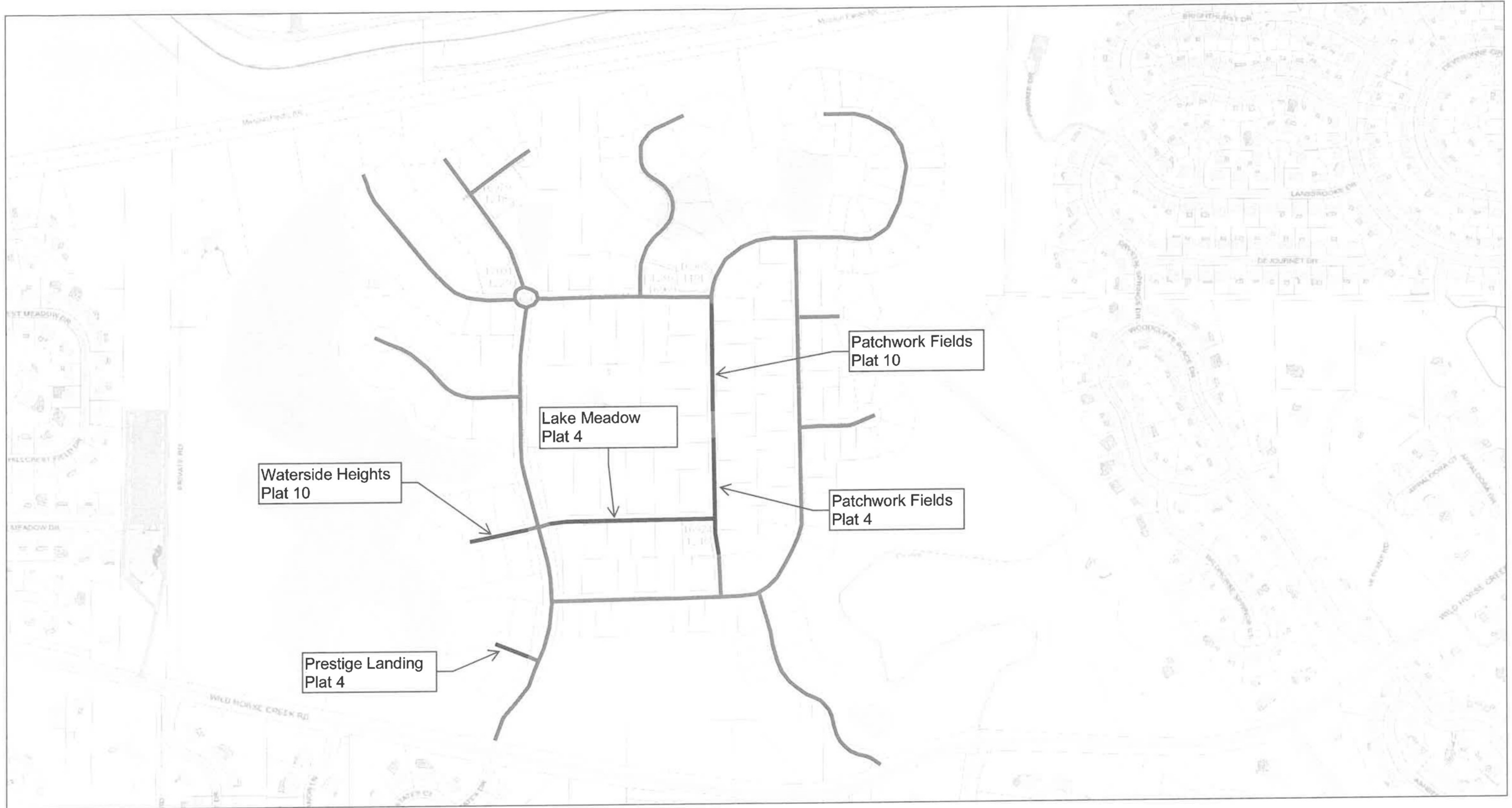
Bob Nations  
MAYOR

ATTEST:

Vickie McBound  
CITY CLERK

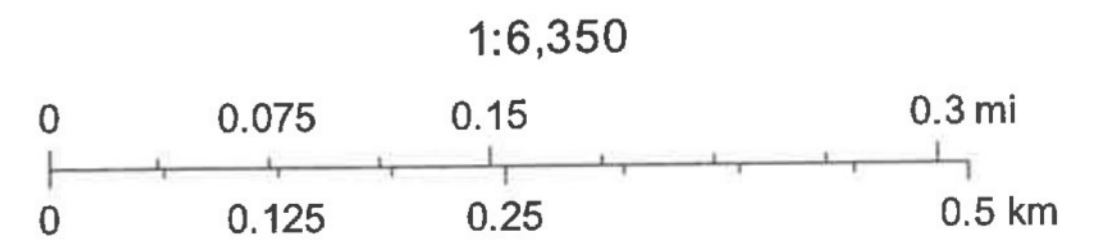
FIRST READING HELD:  
8-19-2024

# Fienup Farms Public Street Acceptance



12/28/2021, 11:47:50 AM

- Parcels
- Preliminary Parcels
- Previously Accepted Streets
- Streets Recommended for Acceptance



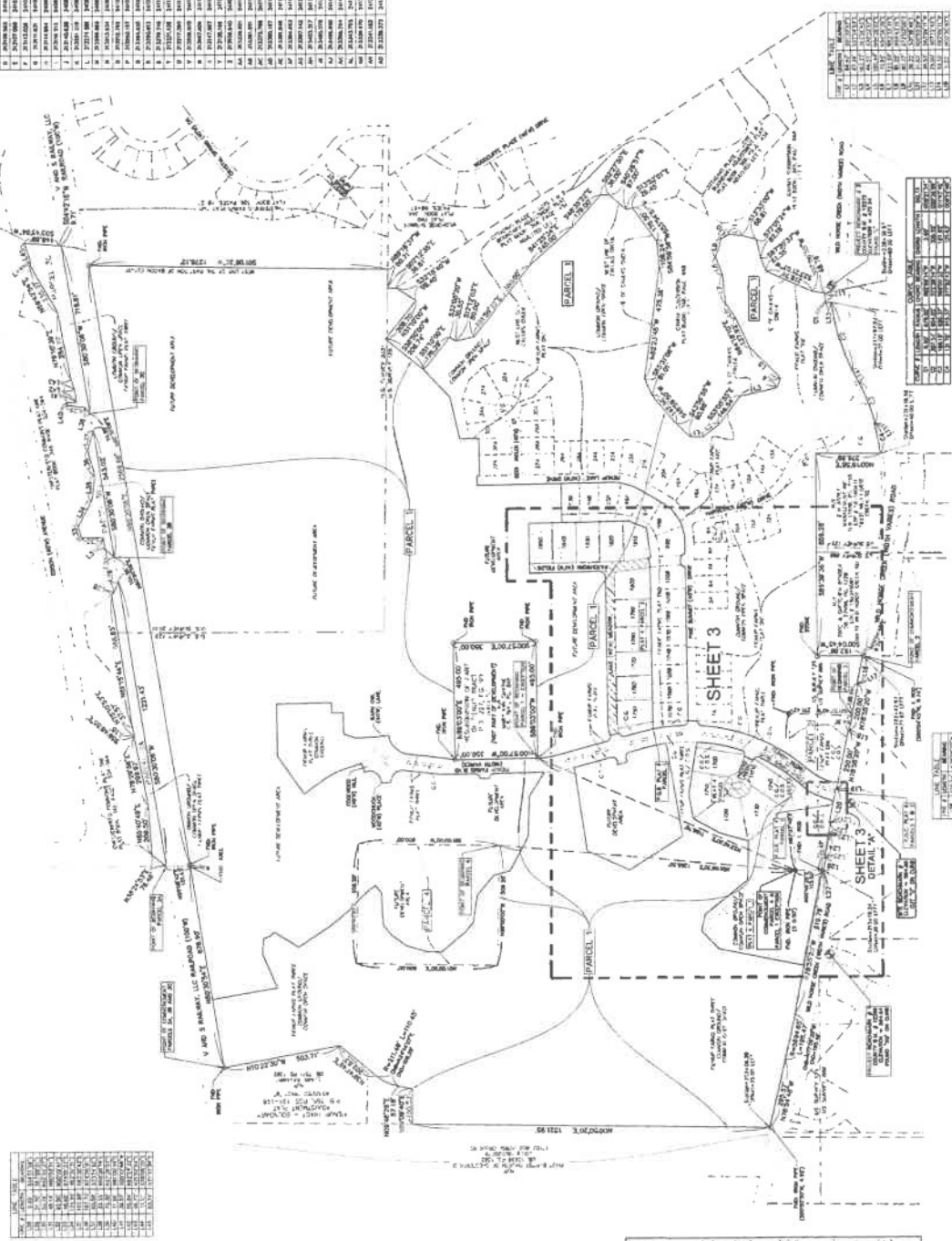


eh

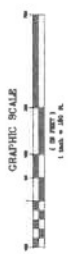
# FIENUP FARMS PLAT FOUR

A TRACT OF LAND BEING PART OF ADJUSTED TRACT "A" OF FIENUP TRACT - BOUNDARY ADJUSTMENT PLAT RECORDED IN PLAT BOOK 366, PAGES 195-198, TOGETHER WITH PART OF A TRACT OF LAND LOCATED IN U.S. SURVEYS 125 AND 588, ALL LOCATED IN U.S. SURVEYS 125 AND 588, TOWNSHIP 45 NORTH, RANGE 4 EAST OF THE FIFTH PRINCIPAL MERIDIAN, CITY OF CHESTERFIELD, ST. LOUIS COUNTY, MISSOURI.  
ZONED: PUD-PLANNED UNIT DEVELOPMENT, ORDINANCE NO. 281.

STATE PLANE COORDINATES	UTM	UTM	UTM
1	18	50	00
2	18	50	00
3	18	50	00
4	18	50	00
5	18	50	00
6	18	50	00
7	18	50	00
8	18	50	00
9	18	50	00
10	18	50	00
11	18	50	00
12	18	50	00
13	18	50	00
14	18	50	00
15	18	50	00
16	18	50	00
17	18	50	00
18	18	50	00
19	18	50	00
20	18	50	00
21	18	50	00
22	18	50	00
23	18	50	00
24	18	50	00
25	18	50	00
26	18	50	00
27	18	50	00
28	18	50	00
29	18	50	00
30	18	50	00
31	18	50	00
32	18	50	00
33	18	50	00
34	18	50	00
35	18	50	00
36	18	50	00
37	18	50	00
38	18	50	00
39	18	50	00
40	18	50	00
41	18	50	00
42	18	50	00
43	18	50	00
44	18	50	00
45	18	50	00
46	18	50	00
47	18	50	00
48	18	50	00
49	18	50	00
50	18	50	00



AREA	AREA	AREA	AREA
1	18	50	00
2	18	50	00
3	18	50	00
4	18	50	00
5	18	50	00
6	18	50	00
7	18	50	00
8	18	50	00
9	18	50	00
10	18	50	00
11	18	50	00
12	18	50	00
13	18	50	00
14	18	50	00
15	18	50	00
16	18	50	00
17	18	50	00
18	18	50	00
19	18	50	00
20	18	50	00
21	18	50	00
22	18	50	00
23	18	50	00
24	18	50	00
25	18	50	00
26	18	50	00
27	18	50	00
28	18	50	00
29	18	50	00
30	18	50	00
31	18	50	00
32	18	50	00
33	18	50	00
34	18	50	00
35	18	50	00
36	18	50	00
37	18	50	00
38	18	50	00
39	18	50	00
40	18	50	00
41	18	50	00
42	18	50	00
43	18	50	00
44	18	50	00
45	18	50	00
46	18	50	00
47	18	50	00
48	18	50	00
49	18	50	00
50	18	50	00



DEVELOPMENT PHASE DETAIL  
SCALE: 1" = 200'



**THE STERLING CO.**  
ENGINEERS & ARCHITECTS

301 N. BROADWAY  
ST. LOUIS, MISSOURI 63102  
PHONE: 314-588-1100

DESIGNED BY	DATE	PROJECT
DRYDEN	10/15/00	FIENUP FARMS PLAT FOUR
CHECKED BY	DATE	PROJECT
JAH	10/15/00	FIENUP FARMS PLAT FOUR
APPROVED BY	DATE	PROJECT
JAH	10/15/00	FIENUP FARMS PLAT FOUR

- LEGEND**
- 1. PROPERTY BOUNDARIES
  - 2. ADJACENT PROPERTY BOUNDARIES
  - 3. LOT BOUNDARIES
  - 4. EASEMENTS
  - 5. UTILITY LINES
  - 6. STREETS
  - 7. DRIVEWAYS
  - 8. DRIVEWAY EASEMENTS
  - 9. DRIVEWAY SETBACKS
  - 10. DRIVEWAY WIDTHS
  - 11. DRIVEWAY CURVES
  - 12. DRIVEWAY SLOPES
  - 13. DRIVEWAY GRADES
  - 14. DRIVEWAY MATERIALS
  - 15. DRIVEWAY FINISHES
  - 16. DRIVEWAY DRAINAGE
  - 17. DRIVEWAY LIGHTING
  - 18. DRIVEWAY LANDSCAPING
  - 19. DRIVEWAY SIGNAGE
  - 20. DRIVEWAY FURNITURE
  - 21. DRIVEWAY UTILITIES
  - 22. DRIVEWAY ACCESSORIES
  - 23. DRIVEWAY IMPROVEMENTS
  - 24. DRIVEWAY MAINTENANCE
  - 25. DRIVEWAY REPAIRS
  - 26. DRIVEWAY REPLACEMENTS
  - 27. DRIVEWAY DEMOLITIONS
  - 28. DRIVEWAY CONSTRUCTION
  - 29. DRIVEWAY OPERATIONS
  - 30. DRIVEWAY MANAGEMENT

AREA	AREA	AREA	AREA
1	18	50	00
2	18	50	00
3	18	50	00
4	18	50	00
5	18	50	00
6	18	50	00
7	18	50	00
8	18	50	00
9	18	50	00
10	18	50	00
11	18	50	00
12	18	50	00
13	18	50	00
14	18	50	00
15	18	50	00
16	18	50	00
17	18	50	00
18	18	50	00
19	18	50	00
20	18	50	00
21	18	50	00
22	18	50	00
23	18	50	00
24	18	50	00
25	18	50	00
26	18	50	00
27	18	50	00
28	18	50	00
29	18	50	00
30	18	50	00
31	18	50	00
32	18	50	00
33	18	50	00
34	18	50	00
35	18	50	00
36	18	50	00
37	18	50	00
38	18	50	00
39	18	50	00
40	18	50	00
41	18	50	00
42	18	50	00
43	18	50	00
44	18	50	00
45	18	50	00
46	18	50	00
47	18	50	00
48	18	50	00
49	18	50	00
50	18	50	00

AREA	AREA	AREA	AREA
1	18	50	00
2	18	50	00
3	18	50	00
4	18	50	00
5	18	50	00
6	18	50	00
7	18	50	00
8	18	50	00
9	18	50	00
10	18	50	00
11	18	50	00
12	18	50	00
13	18	50	00
14	18	50	00
15	18	50	00
16	18	50	00
17	18	50	00
18	18	50	00
19	18	50	00
20	18	50	00
21	18	50	00
22	18	50	00
23	18	50	00
24	18	50	00
25	18	50	00
26	18	50	00
27	18	50	00
28	18	50	00
29	18	50	00
30	18	50	00
31	18	50	00
32	18	50	00
33	18	50	00
34	18	50	00
35	18	50	00
36	18	50	00
37	18	50	00
38	18	50	00
39	18	50	00
40	18	50	00
41	18	50	00
42	18	50	00
43	18	50	00
44	18	50	00
45	18	50	00
46	18	50	00
47	18	50	00
48	18	50	00
49	18	50	00
50	18	50	00

**THE STERLING CO.**  
ENGINEERS & ARCHITECTS

301 N. BROADWAY  
ST. LOUIS, MISSOURI 63102  
PHONE: 314-588-1100

DATE: 10/15/00  
PROJECT: FIENUP FARMS PLAT FOUR



SHEET 2 OF 3









