

RESOLUTION NO. 1730

A RESOLUTION OF THE CITY COUNCIL OF THE CITY OF CREVE COEUR, MISSOURI, ADOPTING THE VENABLE PARK MASTER PLAN.

WHEREAS, the City Council of the City of Creve Coeur recognizes a master plan can serve as the primary document to guide the City's future relating to parks and recreation needs; and

WHEREAS, the City retained TWM Inc., a local engineering firm specializing in master plan projects, to develop a proposed master plan for Venable Park; and

WHEREAS, the Parks and Historic Preservation Committee was actively involved in the process of creating the plan; and

WHEREAS, the proposed plan was developed through a process that involved community engagement of the residents of Creve Coeur, along with City Council, staff, stakeholder groups and the Planning and Zoning Commission; and

WHEREAS, the City Council has determined that it is fully and sufficiently informed on the matter and that the proposed plan serves the general purpose of guiding and accomplishing the existing and future needs of this portion of the park system.

NOW, THEREFORE, BE IT RESOLVED BY THE CITY COUNCIL OF THE CITY OF CREVE COEUR, AS FOLLOWS:

Section 1. The Venable Park Master Plan attached hereto as Exhibit 1 is hereby adopted. The City Administrator and his designated representatives are hereby authorized and directed to take any and all actions necessary, desirable, convenient, or proper in order to carry out the intent of this Resolution and the Plan, subject to Council review and approval of specific projects and expenditures in accordance with established procedures.

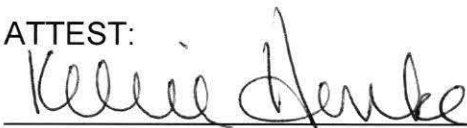
Section 2. This Resolution shall take effect upon approval.

ADOPTED THIS 24 DAY OF JUNE, 2024.



DR. ROBERT HOFFMAN
MAYOR

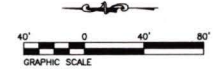
ATTEST:



KELLIE HENKE
CITY CLERK



VENABLE MEMORIAL PARK - CONCEPTUAL LAYOUT



TWM
CONSULTING ENGINEERING
GEOSPATIAL SERVICES

ILLINOIS SWANSEA
WATERLOO
EDWARDSVILLE
PEORIA

MISSOURI ST. CHARLES
ST. LOUIS

TENNESSEE NASHVILLE
CHATTANOOGA

**THOUVENOT, WADE
& MOERCHEN, INC.**

ST. LOUIS OFFICE
3701 LINDBERGH BLVD, SUITE 100
ST. LOUIS, MISSOURI
63127
(314) 241-6300
WWW.TWM-INC.COM



DTLS
LANDSCAPE ARCHITECTURE

DTLS LANDSCAPE ARCHITECTURE
1624 TOWER GROVE AVE
ST. LOUIS, MO 63110
(314) 534-4000



DATE: 4/26/2024

PROJECT:
VENABLE MEMORIAL PARK -
SITE DESIGN IMPROVEMENTS
10630 COUNTRY VIEW DR.
CREVE COEUR, MO 63141

TITLE:
CONCEPTUAL LAYOUT

SHEET 1 of 2



ALTERNATE BID ITEMS:
1. PEDESTRIAN BRIDGE

PARKING DATA

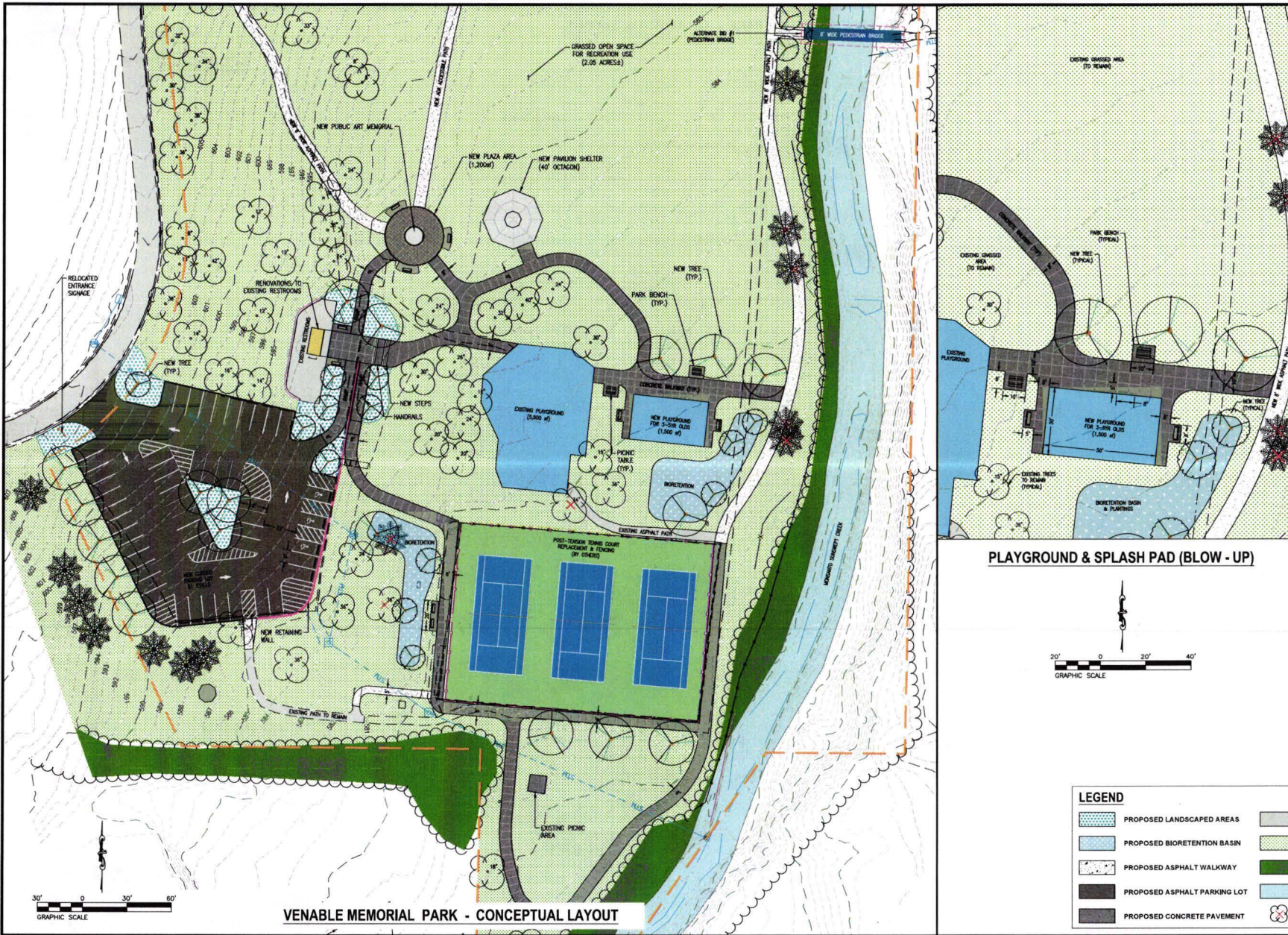
EXISTING PARKING DATA	PROPOSED PARKING DATA
• 48 TOTAL STALLS	• 51 TOTAL STALLS
• 0 ADA STALLS	• 3 ADA STALLS

LEGEND

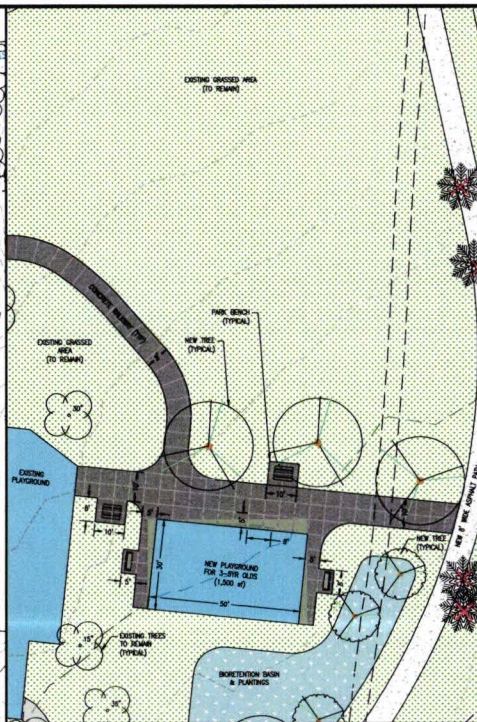
	PROPOSED LANDSCAPED AREAS		EXISTING ASPHALT PAVEMENT TO REMAIN
	PROPOSED BIORETENTION BASIN		GRASSED AREAS
	PROPOSED ASPHALT WALKWAY		EXISTING TREELINE
	PROPOSED ASPHALT PARKING LOT		EXISTING CREEK
	PROPOSED CONCRETE PAVEMENT		TREE TO BE REMOVED

T:\2023\2024\1.000 - 2024\1.1 Proj\Main\01_Schematic\2024-04-26 Concept - Site Plan.dwg By: vcm046

12/15/2023 12:00PM \CADD - 28616\1 - Proj\Plans\21 - Venable Memorial Park - Conceptual - Site - Plan.rvt
 Plot Title: 12/15/2023 12:00PM \CADD - 28616\1 - Proj\Plans\21 - Venable Memorial Park - Conceptual - Site - Plan.rvt
 28616



VENABLE MEMORIAL PARK - CONCEPTUAL LAYOUT



PLAYGROUND & SPLASH PAD (BLOW - UP)

TWM

CONSULTING ENGINEERING
GEOSPATIAL SERVICES

ILLINOIS SWANSEA WATERLOO EDWARDSVILLE PEORIA	MISSOURI ST. CHARLES ST. LOUIS
TENNESSEE NASHVILLE CHATTANOOGA	

THOUVENOT, WADE
& MOERCHEN, INC.

ST. LOUIS OFFICE
3701 LINDBERGH BLVD, SUITE 100
ST. LOUIS, MISSOURI
63127
(314) 241-6300
WWW.TWV-INC.COM

DTLS

LANDSCAPE ARCHITECTURE

DTLS LANDSCAPE ARCHITECTURE
1824 TOWER GROVE AVE
ST. LOUIS, MO 63119
(314) 534-0000

THE CITY OF CREVE COEUR

300 N. NEW BALAS ROAD
CREVE COEUR, MO 63141
(314) 432-0000

DATE: 4/26/2024
PROJECT: VENABLE MEMORIAL PARK - SITE DESIGN IMPROVEMENTS 10630 COUNTRY VIEW DR. CREVE COEUR, MO 63141
TITLE: CONCEPTUAL LAYOUT
SHEET 2 of 2

LEGEND	
	PROPOSED LANDSCAPED AREAS
	PROPOSED BIORETENTION BASIN
	PROPOSED ASPHALT WALKWAY
	PROPOSED ASPHALT PARKING LOT
	PROPOSED CONCRETE PAVEMENT
	EXISTING ASPHALT PAVEMENT TO REMAIN
	GRASSED AREAS
	EXISTING TREELINE
	EXISTING CREEK
	TREE TO BE REMOVED