



ORDINANCE

RELATIVE TO SEASONAL ROAD CLOSURES AND ELIMINATION OF CERTAIN ON-STREET PARKING FOR EXTENDED OUTDOOR DINING AND OTHER NON-VEHICULAR USE

CITY OF NASHUA

In the Year Two Thousand and Twenty-Two

The City of Nashua ordains that Part I “General Legislation”, Chapter 320 “Vehicles and Traffic “of the Nashua Revised Ordinances as amended, is hereby further amended by adding the new underlined article as well as the italicized language as follows :

“ARTICLE XVII Seasonal Road Closures and Modifications

§ 320-92. Effective Dates and Plan.

Effective from 12:01 A.M. May 1st through midnight October 15th in years 2022, 2023 and 2024, the roads and on-street parking shown on Plan 320-92 are modified as shown on said plan. Such modifications include but may not be limited to partial closing of a street to vehicular traffic, elimination of on-street parking spaces, changes to parking time limits, changes to cost of parking spaces, including making them free, and handicap parking spaces relocated or created. The modifications are to accommodate non-vehicular traffic and uses by the public or outdoor dining.

§ 320-93. Plan Amendments.

Upon recommendation of the Director of Public Works and the Parking Manager, and with the approval of the Committee on Infrastructure, the Mayor may adjust locations of barriers, parking spaces, fees for parking, time for parking spaces, and location of parking spaces as circumstances warrant. In such cases, a new plan shall be published at least 14 calendar days prior to the adjustments.

§ 320-94. Conflicts.

During the time periods set forth in Section 390-92, this Article supersedes any inconsistent ordinances or parts of ordinances.”

That extended dining by use of the barriers only be allowed directly in front of the businesses using them and that two spaces in front of Glorious Possibilities would be available and would allow businesses to extend laterally with the approval of the business being encroached upon or the abutter

To allow two parking spots in front of Glorious Possibilities

To paint the barriers a light red brick color (pantone smart 18-1350 tcx burnt brick or equivalent) with a white reflective strip

To defer fees for one year and amend the ordinance to reflect years two and three will be tentatively approved pending the development of a fee agreement for land use by the restaurants which require final approval by the board of aldermen

To shorten the length of the barriers on the northwest corner of factory street and main street by twenty (20) feet from the north side

To accept map 4 and by accepting map 4 being it the last map of this program, we accept all maps as amended and voted on

That the effective dates the barriers will be from May 1st to the Friday before Mother's Day until the first Sunday in October

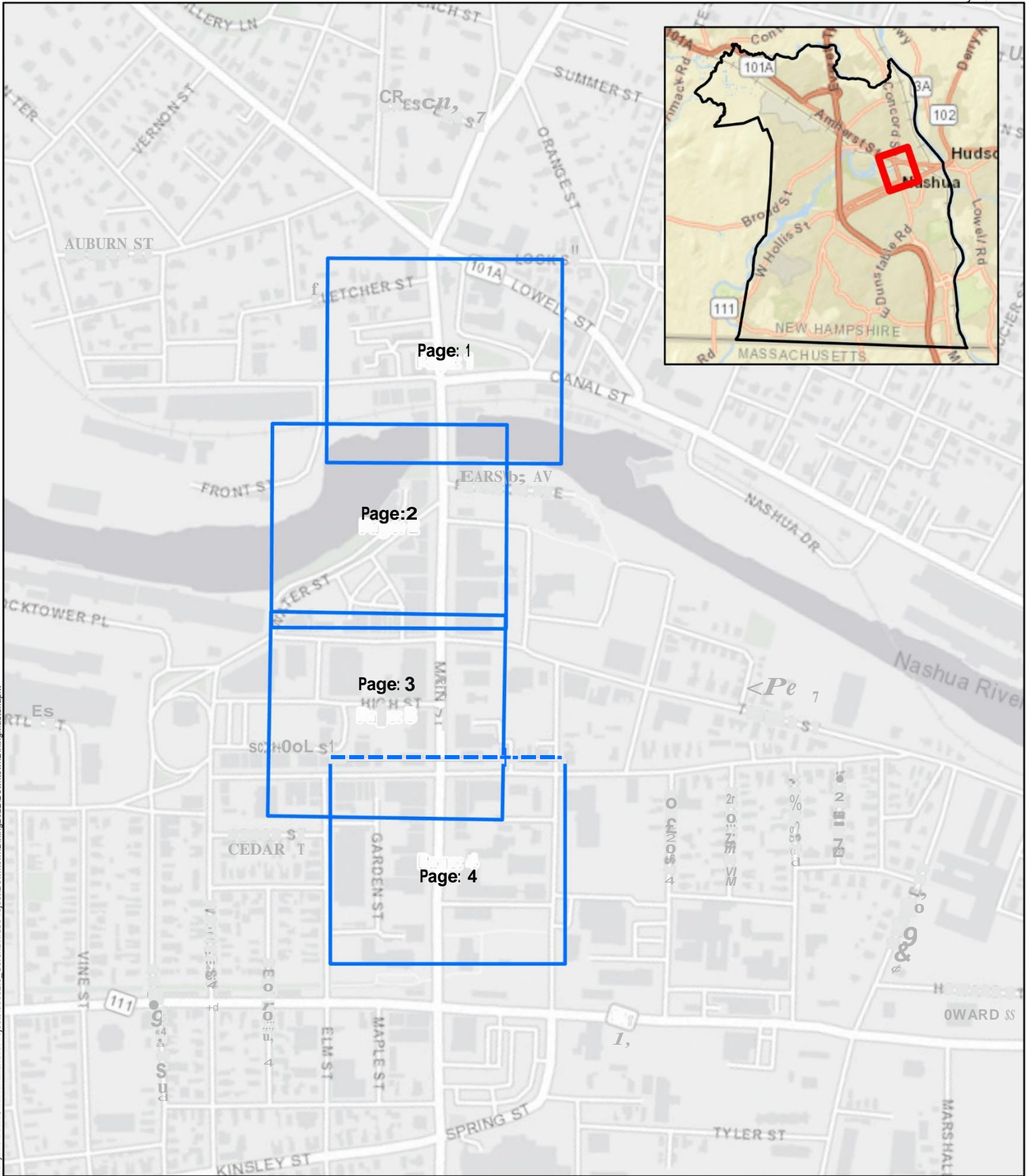
To return two full spaces in front of 127 Main Street (San Francisco Kitchen) and shortening the length of the barriers on the northwest corner at Factory Street and Main Street by 20 feet from the north side and returning those two spaces; and also in addition to allow that beyond the two spaces that one be a dedicated and signed handicapped spot to be placed in front of the Wingate property as well as to move the 15 minute parking behind that

This legislation shall take effect upon passage.

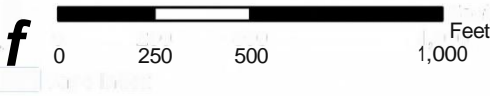
PASSED BY THE BOARD OF ALDERMEN – MARCH 22, 2022

APPROVED BY THE MAYOR – MARCH 23, 2022

ATTEST: SUSAN K. LOVERING, CITY CLERK



\\CityFile\Users\sutherland\GIS\Projects\00002\0_Coronavirus\Project\DownTownDining\DownTownDiningMaster.aprx



L7 Page Index

Proposed Layout	Downtown Nashua
Outdoor Dining	
Cover Sheet	



\\CityFile\Users\sutherland\GIS\Projects\Project\DowntownDining2022\DowntownDiningMaster.aprx

- Message Board
- Merge Left Sign
- Right Turn Lane
- Traffic Barrel
- Zone Layout
- Dining Establishments
- Outdoor Dining Area
- Public Seating Area
- Proposed Handicap Parking Space
- Proposed Planing Parking Space

Proposed Layout

Proposed Handicap Parking Space

Proposed Planing Parking Space

Downtown Nashua
Outdoor Dining
Accommodations





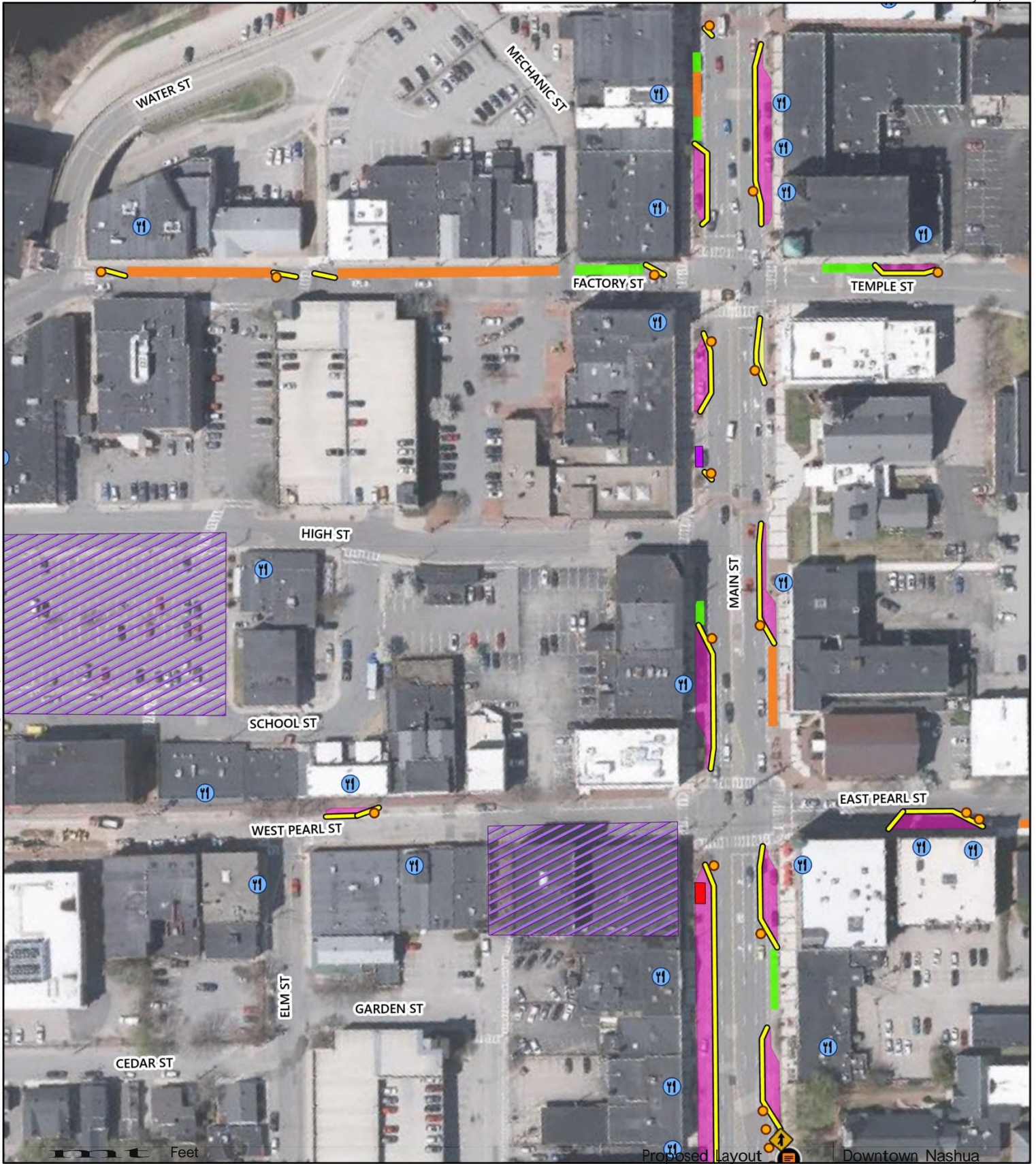
\\CityFile\Users\sautherland\GIS\Projects\00002_0_Coronavirus\Project\DowntownDining\2022\DowntownDiningMaster.aprx

Proposed Layout

Downtown Nashua

- 0 62.5 125 250 Feet
- @ Message Board
- @ Merge Left Sign
- @ Right Turn Lane
- o Traffic Barrel
- Zone Layout
- @ Dining Establishments
- Outdoor Dining Area
- Public Seating Area
- Delivery/ 15 Minute Curbside Pickup Area
- 90 Minute Parking
- Proposed Handicap Parking Space

Outdoor Dining Accommodations
Page 2 of 4

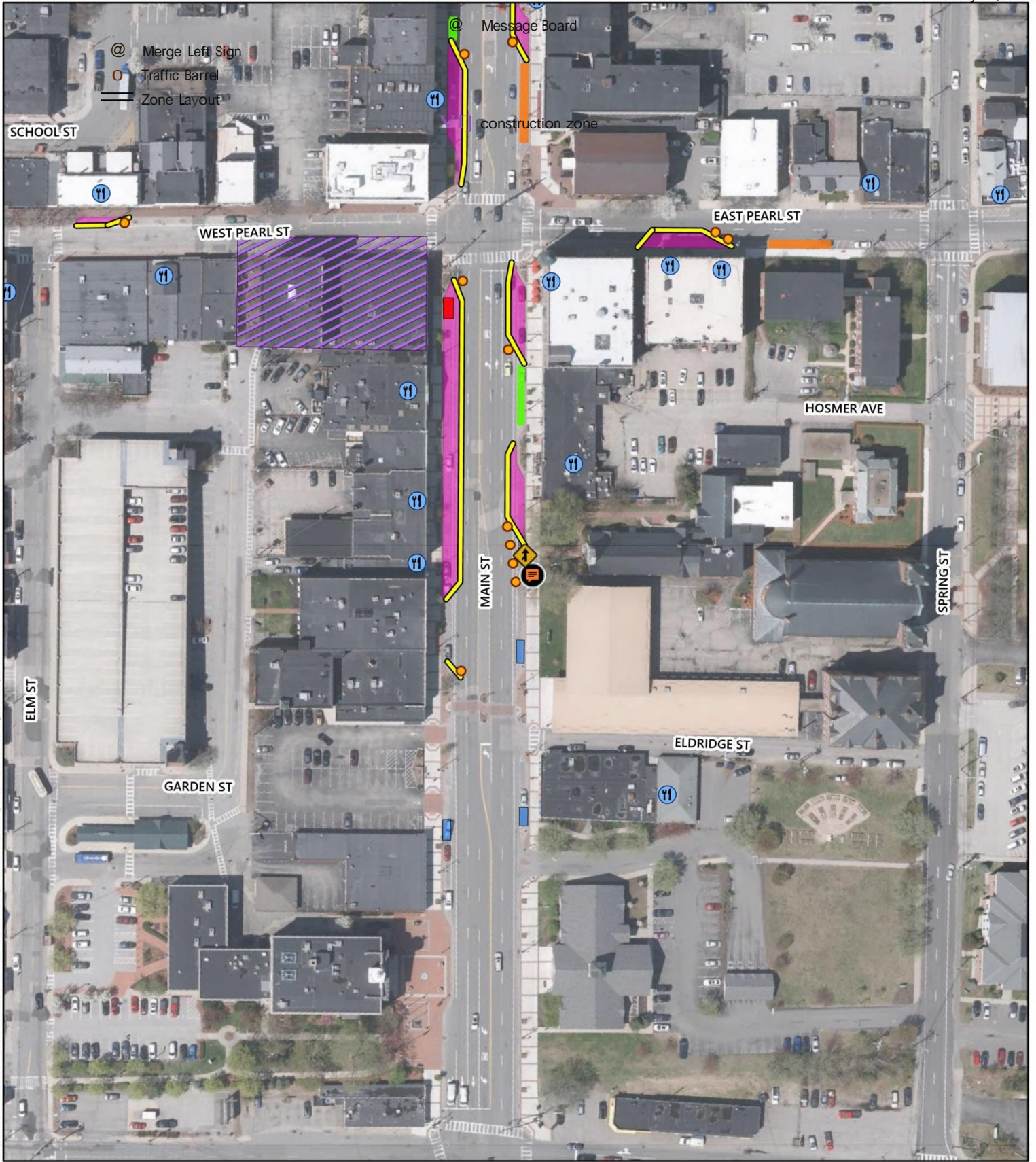


I:\CityFile\Users\sautherland\GIS\Projects\00002_0_Coronavirus\Project\DowntownDining2022\DowntownDiningMaster.aprx

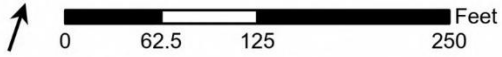
- ↑ 0 62.5 125 250 Feet
- @ Message Board
- @ Merge Left Sign
- Traffic Barrel
- Zone Layout
- VI construction zone
- Ⓡ Dining Establishments
- Outdoor Dining Area
- Public Seating Area
- Delivery/ 15 Minute Curbside Pickup Area
- 90 Minute Parking

- Existing Handicap Parking Space
- Relocated to Proposed Handicap Parking Space
- Proposed Handicap Parking Space

Outdoor Dining Accommodations
Page 3 of 4



I:\CityFile\Users\sutherland\GIS\Projects\00002_0_Coronavirus\Project\DowntownDining2022\DowntownDiningMaster.aprx



Proposed Layout

Downtown Nashua

- | | | |
|----------------|-----------------|-----------------|
| Message Board | Merge Left Sign | Merge Left Sign |
| Traffic Barrel | Traffic Barrel | Traffic Barrel |
| Zone Layout | Zone Layout | Zone Layout |