

**NEW HANOVER TOWNSHIP
MONTGOMERY COUNTY, PENNSYLVANIA**

RESOLUTION 24-12

A RESOLUTION AMENDING THE NEW HANOVER TOWNSHIP OPEN SPACE PLAN TO IDENTIFY ADDITIONAL PARCELS TARGETED FOR OPEN SPACE ACQUISITION

WHEREAS, the New Hanover Township Board of Supervisors adopted the New Hanover Township Open Space Plan by Resolution after a properly advertised public hearing held on March 27, 2006; and

WHEREAS, New Hanover Township desires to amend the Open Space Plan to identify additional parcels targeted for open space acquisition and preservation; and

WHEREAS, New Hanover Township, with assistance from Knight Engineering, Inc., has prepared an open space amendment for consideration and possible adoption by the Board of Supervisors; and

WHEREAS, Section 302(c) of the Pennsylvania Municipalities Planning Code requires that any amendment to the New Hanover Township Open Space Plan be adopted by Resolution after a properly advertised public hearing; and

WHEREAS, a public hearing on the proposed amendment to the New Hanover Township Open Space Plan was held on August 1, 2024 at 6:30PM at the New Hanover Township Municipal Building.

NOW, THEREFORE, BE IT RESOLVED, the Board of Supervisors of New Hanover Township hereby resolves as follows:

1. The New Hanover Township Board of Supervisors hereby adopts this Resolution as an amendment to the official New Hanover Township Open Space Plan, the New Hanover Township Open Space Plan Amendment, as prepared by Knight Engineering, Inc. A true and

correct copy of the Open Space Plan, as amended, is attached hereto and incorporated herein by reference as Exhibit "A."

2. All future modifications of the New Hanover Township Open Space Plan shall be enacted from time to time by Resolution of the New Hanover Township Board of Supervisors, as permitted under the applicable terms of the Pennsylvania Municipalities Planning Code.

3. This Resolution shall become effective immediately.

RESOLVED and **ENACTED** this 1st day of August, 2024 by the Board of Supervisors of New Hanover Township, Montgomery County, Pennsylvania, in lawful session duly assembled.


**NEW HANOVER TOWNSHIP
BOARD OF SUPERVISORS**



Marie Livelsberger



William Ross Snook



Kurt D. Zebrowski



D. W. Boone Flint



Keith Youse

ATTEST:



Jamie L. Gwynn, Township Manager

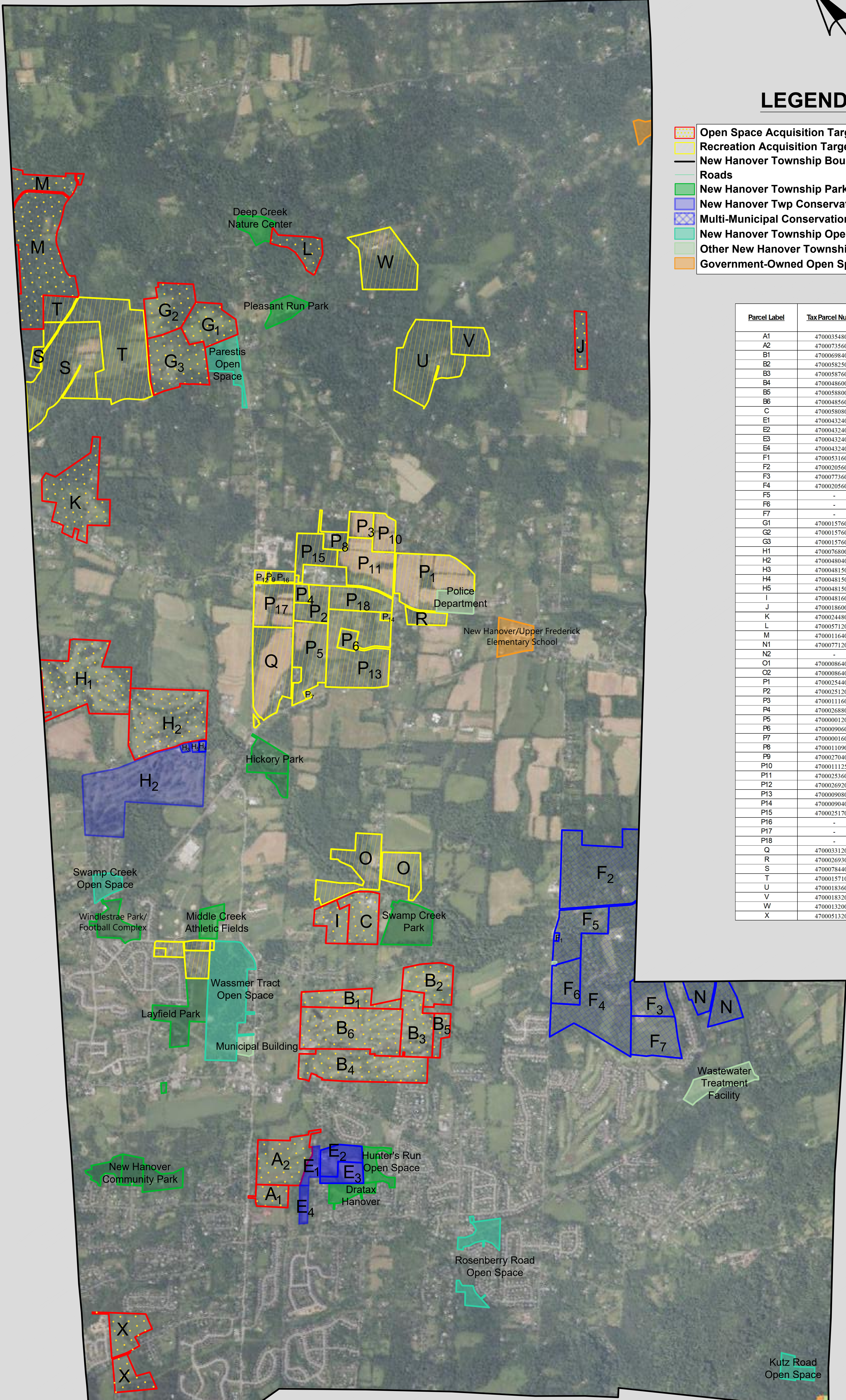
NEW HANOVER TOWNSHIP: ACQUISITION PLAN UPDATE



LEGEND

- Open Space Acquisition Target
- Recreation Acquisition Target
- New Hanover Township Boundary
- Roads
- New Hanover Township Parks
- New Hanover Twp Conservation Easements
- Multi-Municipal Conservation Easement
- New Hanover Township Open Space
- Other New Hanover Township Properties
- Government-Owned Open Space

Parcel Label	Tax Parcel Number
A1	470003548005
A2	470007356004
B1	470006984007
B2	470005825005
B3	470005876008
B4	470004860007
B5	470005880004
B6	470004856002
C	470005808004
E1	470004324003
E2	470004324012
E3	470004324021
E4	470004324009
F1	470005316001
F2	470002056003
F3	470007736002
F4	470002056003
F5	-
F6	-
F7	-
G1	470001576024
G2	470001576015
G3	470001576006
H1	470007680004
H2	470004804009
H3	470004815034
H4	470004815025
H5	470004815016
I	470004816006
J	470002448001
K	470002448007
L	470005712001
M	470001164004
N1	470007712008
N2	-
O1	470000864007
O2	470000864007
P1	470002544001
P2	470002512006
P3	470001116025
P4	470002688001
P5	470000012004
P6	470000906001
P7	470000016009
P8	470001109023
P9	470002704003
P10	470001112506
P11	470002536009
P12	470002692006
P13	470000908008
P14	470000904003
P15	470002517001
P16	-
P17	-
P18	-
Q	470003312007
R	470002693005
S	470007844002
T	470001571002
U	470001836007
V	470001832002
W	470001320001
X	470005132005



Parcel Label	Tax Parcel Number	Property Owner	Property Address	Parcel Deed Area (Acres)	Parcel Shape Area (Acres)	Total Shape Area (Acres)	Designation (Twp Park, Twp Open Space, Twp C.E., Open Space Target, Rec. Target, Other)
A1	470003548005	Freed's Partnership	2024 Swamp Pike		10.86		Open Space Target
A2	470007356004	Freed's Partnership	2024 Swamp Pike	46.55	35.68	46.53	Open Space Target
B1	470006984007	Gross William E & William P	2944 Lutheran Rd		54.59		Open Space Target
B2	470005825005	Gross William E & William P	2944 Lutheran Rd	27.21	26.13		Open Space Target
B3	470005876008	Gross William E & William P	Po Box 387	27.62	28.29		Open Space Target
B4	470004860007	Gross William E & William P	2944 Lutheran Rd	87.7	21.36		Open Space Target
B5	470005880004	Gross William E & William P	2944 Lutheran Rd	35.12	8.35		Open Space Target
B6	470004856002	Gross William E & William P	Lutheran Rd		65.44	204.16	Open Space Target
C	470005808004	Casey Bryan T & Danielle M	3134 Lutheran Rd	27.13	25.06	25.06	Open Space Target
E1	470004324003	Firely Enterprises Llc	364 Maple Ave	34.56	5.98		Township Conservation Easement
E2	470004324012	Firely Enterprises Llc	364 Maple Ave		13.81		Township Conservation Easement
E3	470004324021	Firely Enterprises Llc	364 Maple Ave		9.79		Township Conservation Easement
E4	470004324009	Firely Enterprises Llc	364 Maple Ave		4.97	34.54	Township Conservation Easement
F1	470005316001	Girl Scouts Of Philadelphia Inc	330 Manor Rd	0.651	0.60		Multi-Municipal Conservation Easement
F2	470002056003	Girl Scouts Of Philadelphia Inc	3310 Manor Rd	191.83	78.15		Multi-Municipal Conservation Easement
F3	470007736002	Girl Scouts Of Philadelphia Inc	3311 Manor Rd	49.4	19.78		Multi-Municipal Conservation Easement
F4	470002056003	Girl Scouts Of Philadelphia Inc	330 Manor Rd		107.97		Multi-Municipal Conservation Easement
F5	-	Girl Scouts Of Philadelphia Inc			30.14		Multi-Municipal Conservation Easement
F6	-	Girl Scouts Of Philadelphia Inc			18.13		Multi-Municipal Conservation Easement
F7	-	Girl Scouts Of Philadelphia Inc			28.23	283.01	Multi-Municipal Conservation Easement
G1	470001576024	Flint Joan G & D W Boone Co-Trustees	528 Erb Rd	26.64	26.57		Open Space Target
G2	470001576015	Daniel Wb Flint	528 Erb Rd	31.32	31.00		Open Space Target
G3	470001576006	Flint D W Boone	528 Erb Rd	45.48	44.04	101.60	Open Space Target
H1	470007680004	Patel Ragesh R & Amita R	1921 Ludwig Rd	69	78.53		Open Space Target
H2	470004804009	Patel Ragesh R & Amita R	1921 Ludwig Rd	187.09	169.37	203.54	Open Space Target
H3	470004815034	Patel Ragesh R & Amita R	1921 Ludwig Rd	1.22	1.01		Township Conservation Easement
H4	470004815025	Patel Ragesh R & Amita R	1922 Ludwig Rd	1.15	1.08		Township Conservation Easement
H5	470004815016	Patel Ragesh R & Amita R	1923 Ludwig Rd	1.15	1.09	47.54	Township Conservation Easement
I	470004816006	Hoagey Perry A Revocable Trust The	3090 Lutheran Rd	16.67	16.37	16.37	Open Space Target
J	470001860001	Nester Stern Jr & Erin C	2566 Finn Rd	10.14	10.32	10.32	Open Space Target
K	470002448007	Murianka Peter S & Olga	40 Brian Dr	54.85	56.68	56.68	Open Space Target
L	470005712001	Obrien Roger	8735 Sagamore Rd	19.33	16.20	16.20	Open Space Target
M	470001164004	NHD 280 LLC	2620 Egypt Rd	131.51	104.29	104.29	Open Space Target
N1	470007712008	Girl Scouts Of Phila Inc	330 Manor Rd	26.76	10.86		Multi-Municipal Conservation Easement
N2	-				15.17	26.03	Multi-Municipal Conservation Easement
O1	470000864007	Boettger Marcella A	3321 Church Rd	56.502	34.75		Recreation Acquisition Target
O2	470000864007	Boettger Marcella A	3321 Church Rd		20.44	55.19	Recreation Acquisition Target
P1	470002544001	Gibraltar Rock Inc	355 New Bold Rd	50.24	50.39		Recreation Acquisition Target
P2	470002512006	Gibraltar Rock Inc	355 New Bold Rd	16.73	15.37		Recreation Acquisition Target
P3	470001116025	Gibraltar Rock Inc	355 New Bold Rd		9.45		Recreation Acquisition Target
P4	470002688001	Gibraltar Rock Inc	355 New Bold Rd		4.17		Recreation Acquisition Target
P5	470000012004	Gibraltar Rock Inc	356 New Bold Rd		34.06		Recreation Acquisition Target
P6	470000906001	Gibraltar Rock Inc	355 New Bold Rd	5.16	5.26		Recreation Acquisition Target
P7	470000016009	Gibraltar Rock Inc	Big Rd	0.76	0.70		Recreation Acquisition Target
P8	470001109023	Gibraltar Rock Inc	2180 Colflesh Rd	7.31	7.26		Recreation Acquisition Target
P9	470002704003	Conestoga Teleph&Telegraph Co	Hoffmansville Rd	0.7	0.84		Recreation Acquisition Target
P10	470001112506	Sahara Sand Inc	355 New Bold Rd	13.26	12.43		Recreation Acquisition Target
P11	470002536009	Gibraltar Rock Inc	Hoffmansville Rd	65.32	34.22		Recreation Acquisition Target
P12	470002692006	Gibraltar Rock Inc	Hoffmansville Rd	16.73	1.93		Recreation Acquisition Target
P13	470000908008	Gibraltar Rock Inc	355 New Bold Rd	102.63	64.64		Recreation Acquisition Target
P14	470000904003	Gibraltar Rock Inc	355 New Bold Rd	1.16	1.33		Recreation Acquisition Target
P15	470002517001	Gibraltar Rock Inc	Hoffmansville Rd	18.01	18.04		Recreation Acquisition Target

Includes Curtilage Area

Parcel ID's unknown

Parcel ID's unknown

Parcel ID's unknown

Conservation Easement Areas is only 47.54

N1/N2 is 1 single parcel

P16	-				3.95		Recreation Acquisition Target	Parcel ID's unknown
P17	-				26.55		Recreation Acquisition Target	Parcel ID's unknown
P18	-				20.61	311.20	Recreation Acquisition Target	Parcel ID's unknown
Q	470003312007	J Ward Real Estate Llc	2225 Big Rd	45.807	49.07	49.07	Recreation Acquisition Target	
R	470002693005	Sapp James A & Sharon A	645 Spruce St	8.561	8.18	8.18	Recreation Acquisition Target	
S	470007844002	Moyer Timothy D & Sharon K	501 Woodland Rd	81.57	81.03	81.03	Recreation Acquisition Target	
T	470001571002	Nunan John A Jr & Fumie	531 Erb Rd	92	90.09	90.09	Recreation Acquisition Target	
U	470001836007	Bowser Nelson D	565 Hildebrandt Rd	63.88	58.90	58.90	Recreation Acquisition Target	
V	470001832002	Black Jonathan H	621 Hildebrandt Rd	16.14	15.19	15.19	Recreation Acquisition Target	
W	470001320001	Firely Enterprises Llc	364 Maple Ave	45.43	45.44	45.44	Recreation Acquisition Target	
X	470005132005	Macintosh Homes LLC	342 Moyer Rd	35.45	35.00	35.00	Open Space Target	
Pleasant Run Park	470006693001	New Hanover Township	600 Schultz Road	11.13	11.13	11.13	Twp Park	
NHT Community Park	470002850109	New Hanover Township	2766 Gail Drive, Gilbertsville	12	11.68		Twp Park	
NHT Community Park	470001879225	New Hanover Township	Gail Drive	8.36	9.18		Twp Park	
NHT Community Park	470002749147	New Hanover Township	0 Bow Ln	8.26	8.35	29.21	Twp Park	
Deep Creek Nature Park	470005700004	New Hanover Township	Deep Creek Rd	11.48	10.83	10.83	Twp Park	
Swamp Creek Park	470005816032	New Hanover Township	3179 Reifsnnyder Road, Gilbertsville	27.29	27.16	27.16	Twp Park	
Hickory Park	470003314005	New Hanover Township	2140 Big Road, Gilbertsville	20.67	20.55	20.55	Twp Park	
Windiestrae Park/Football Complex	470005022527	New Hanover Township	132 Chalet Road, Gilbertsville	16.9	16.56	16.56	Twp Park	
Middle Creek Athletic	470003360211	New Hanover Township	0 Dotter Road	9.54	9.78	9.78	Twp Park	
Layfield Park	470001418002	New Hanover Township	Dotter Road	28.227	28.20	28.20	Twp Park	
Wassmer Tract Open Space	470001436002	New Hanover Township	Dotter Road	64.55	65.71	65.71	Twp Open Space	
Hunters Run Open Space	470006225109	New Hanover Township	Romig Rd	11.07	10.63	10.63	Twp Park	
Dratax Hanover	470000850771	New Hanover Township	Charles Road	9.87	10.28	10.28	Twp Park	
Rosenberry Road Open Space	470006288208	New Hanover Township	Rosenberry Road	11.3	11.53		Twp Open Space	
Rosenberry Road Open Space	470007688329	New Hanover Township	Rosenberry Road	5.46	5.64	17.17	Twp Open Space	
Kutz Road Open Space	470006472006	New Hanover Township	Schaffer Road	9.81	8.98	8.98	Twp Open Space	
Parestis Open Space	470004668019	New Hanover Township	2023 Little Road	18.04	17.94	17.94	Twp Open Space	
Wastewater Treatment Facility	470007760041	New Hanover Township	2990 Fagleysville Road	19.68	19.27	19.27	Other NHT Properties	
Police Department	470002748301	New Hanover Township	2373 Hoffmansville Rd	12.61	12.04	12.04	Other NHT Properties	
New Hanover/Upper Frederick Elementary School	470000032002	New Hanover Township	2547 Big Rd	17.42	16.69	16.69	Other Government Owned Property	
Upper Perkiomen County Park	470001292002	Montgomery County	Deep Creek Rd	4.67	4.56	4.56	Other Government Owned Property	
NHT Pump Station	470005312014	New Hanover Township Authority	2943 N Charlotte St	0.3	0.25	0.25	Other NHT Properties	
Swamp Creek Open Space	470005022545	New Hanover Township	Big Road	9.36	8.91	8.91	Twp Open Space	
Municipal Building	470003880006	New Hanover Township	2943 N Charlotte St	5.38	4.89	4.89	Other NHT Properties	

2246.81 2275.92 2275.92

Total Recreation Tartet Area	707.90	714.29
Total Open Space Target Area	878.81	819.75
<hr/>		
TOTAL TARGET AREAS	1586.71 Acres	1534.05 Acres
Total Township Conservation Easement Area	38.08	82.09
Total Multi-Municipal Conservation Easement	268.64	309.04
Total Township Park Area	174.80	174.34
Total Other Areas	37.97	36.45
Total Township Open Space Area	118.52	118.71
Total Other Gov. Owned Property	22.09	21.25
<hr/>		
TOTAL PROTECTED AREAS	660.10 Acres	741.87 Acres
	2246.81 Acres	2275.92 Acres