
Sponsored by: Council Members Bibb and Koskela

AN ORDINANCE APPROVING THE RECORD PLAT OF HARVEST AT HOPEWELL PLAT 6 AND AUTHORIZING THE CITY CLERK TO ATTEST AND CERTIFY APPROVAL OF SAID PLAT.

WHEREAS, the record plat referenced herein has been reviewed by the City Engineer or his/her designee and determined to be complete as required by the Ordinances of the City of O'Fallon; and

WHEREAS, the City Council has determined that the plat conforms closely to the preliminary plat as finally approved and to the provisions of the Subdivision Code and Zoning Code as required by Section 405.060 of the O'Fallon City Code;

NOW, THEREFORE, BE IT ORDAINED BY THE COUNCIL OF THE CITY OF O'FALLON, MISSOURI, AS FOLLOWS:

SECTION 1: The Record Plat of Harvest at Hopewell, Plat 6, which property is located in the City of O'Fallon, Missouri, as prepared by Sterling Engineering dated June of 2024 is hereby approved as submitted to the City Council.

SECTION 2: The City Clerk is hereby authorized to sign the record plat signifying approval by the City Council of said plat.

SECTION 3: No site improvements are accepted for maintenance by the City by the passage of this Ordinance and same will not be accepted by the City until they are built and approved in full compliance with O'Fallon Ordinances and rules pertaining thereto.

SECTION 4: This ordinance shall be in full force and effect from and after its passage and approval by the Mayor.

First Reading: July 25, 2024

Second Reading: July 25, 2024

PASSED BY THE CITY COUNCIL FOR THE CITY OF O'FALLON, MISSOURI, THIS 25th DAY OF JULY, 2024.



Bill Hennessy

Presiding Officer

Attest:

Bess Bacher

Bess Bacher, City Clerk

APPROVED BY THE MAYOR FOR THE CITY OF O'FALLON, MISSOURI, THIS 25TH DAY OF JULY, 2024.



Bill Hennessy

Bill Hennessy, Mayor

Attest:

Bess Bacher

Bess Bacher, City Clerk

Approved as to Form:

Kevin M. O'Keefe

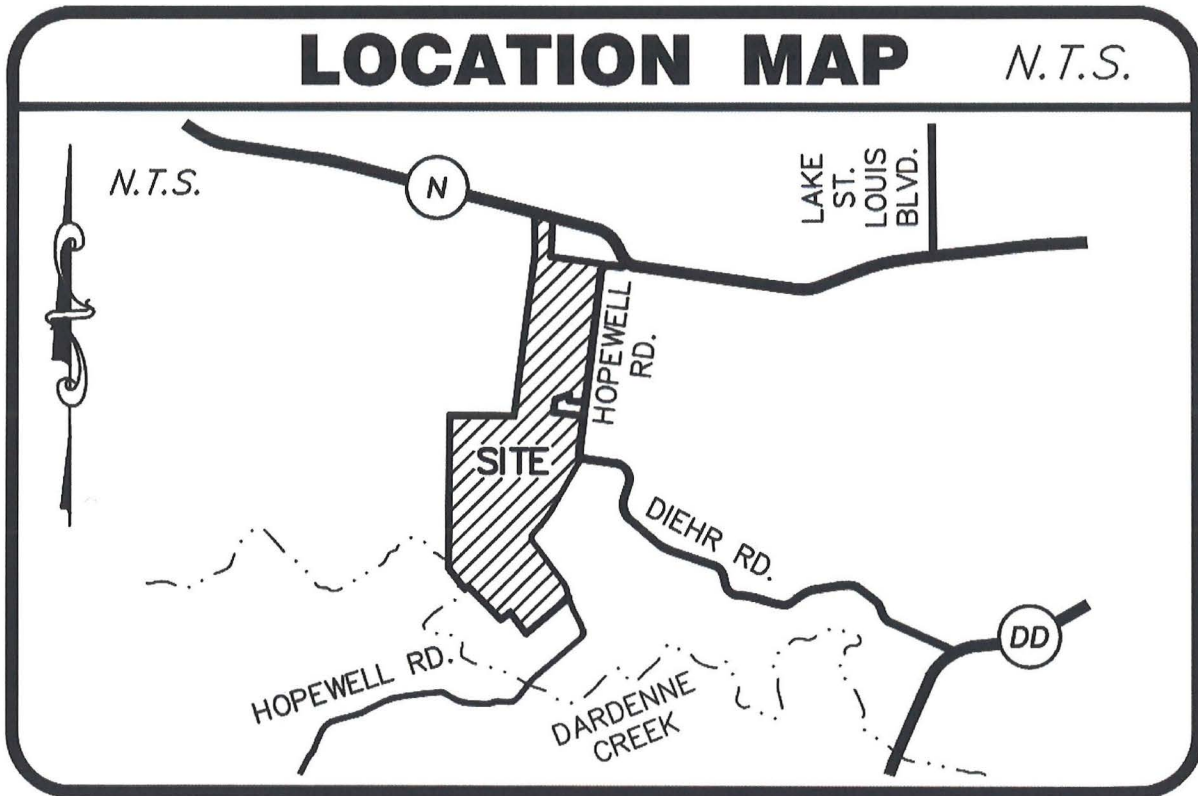
Kevin M. O'Keefe, City Attorney

Record Plat

HARVEST AT HOPEWELL PLAT 6

A Resubdivision of Parcel "K" of "Harvest at Hopewell Plat One-B"
(DOC. #: _____) Located in U.S. Survey 61, Township 46 North,
Range 2 East of the Fifth Principal Meridian,
City of O'Fallon
St. Charles County, Missouri

LOCATION MAP

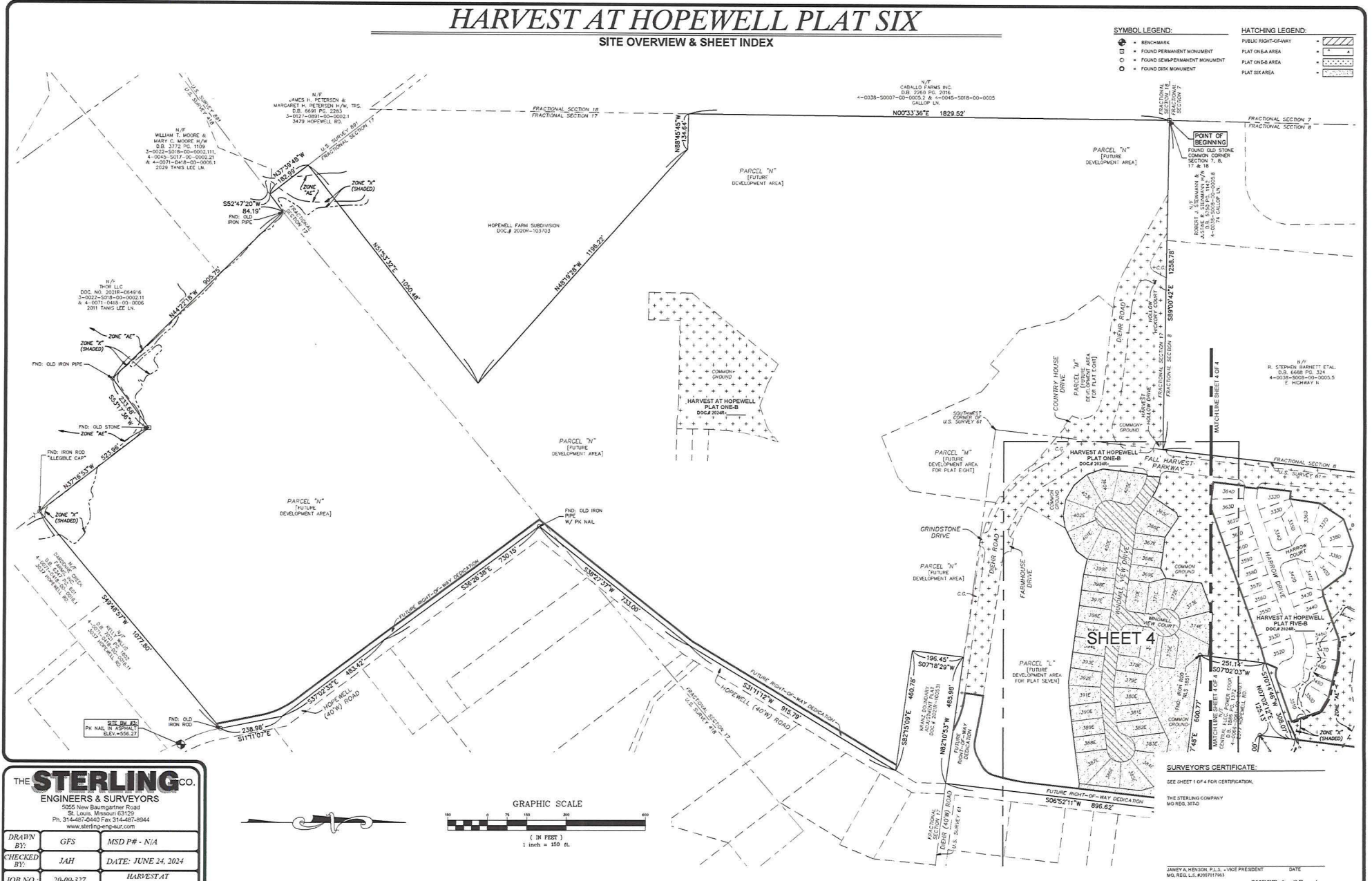


HARVEST AT HOPEWELL PLAT SIX

SITE OVERVIEW & SHEET INDEX

- SYMBOL LEGEND:**
- BENCHMARK
 - FOUND PERMANENT MONUMENT
 - FOUND SEMI-PERMANENT MONUMENT
 - FOUND DISK MONUMENT

- HATCHING LEGEND:**
- ▨ PUBLIC RIGHT-OF-WAY
 - ▨ PLAT ONE-A AREA
 - ▨ PLAT ONE-B AREA
 - ▨ PLAT SIX AREA



THE STERLING CO.
ENGINEERS & SURVEYORS
 5025 New Baumgartner Road
 St. Louis, Missouri 63129
 Ph. 314-487-0440 Fax 314-487-8944
 www.sterling-engineers.com

DRAWN BY:	GFS	MSD P# - N/A
CHECKED BY:	JAH	DATE: JUNE 24, 2024
JOB NO.:	20-09-327	HARVEST AT HOPEWELL



Drawing name: V:\2023\27 Highway N Assembly\Drawings\Surveying\Record\0217Rn0.dwg Plotted on: Jun 24, 2024 - 2:40pm Plotted by: gpm10

SURVEYOR'S CERTIFICATE:
 SEE SHEET 1 OF 4 FOR CERTIFICATION.
 THE STERLING COMPANY
 MO REG. 1740

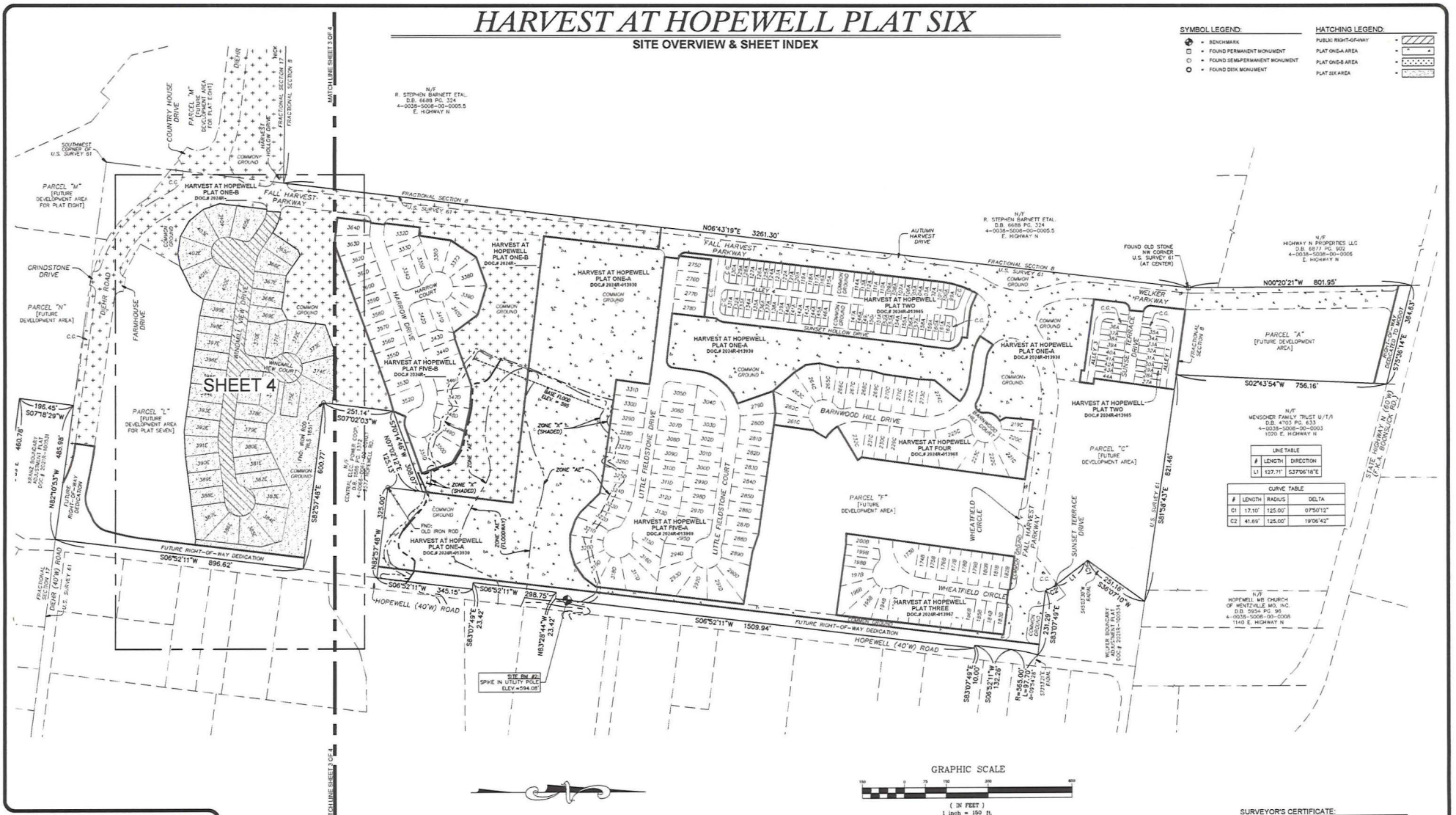
JANEVA, HENSKI, P.L.L.C. - VICE PRESIDENT DATE
 MO. REG. L.S. #200717963

SHEET 2 OF 4

HARVEST AT HOPEWELL PLAT SIX

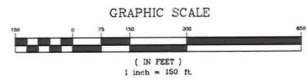
SITE OVERVIEW & SHEET INDEX

SYMBOL LEGEND:		HATCHING LEGEND:	
	BENCHMARK		PUBLIC RIGHT-OF-WAY
	FOUND PERMANENT MONUMENT		PLAT ONE-A AREA
	FOUND SEMI-PERMANENT MONUMENT		PLAT ONE-B AREA
	FOUND DISM. MONUMENT		PLAT SIX AREA



#	LENGTH	DIRECTION
LI	127.71'	S37°06'18"E

#	LENGTH	RADIUS	DELTA
CI	17.10'	125.00'	0°50'12"
C2	41.68'	125.00'	1°06'42"



THE STERLING CO.
ENGINEERS & SURVEYORS
5025 New Baumgardner Road
St. Louis, Missouri 63129
Ph. 314-487-2440 Fax 314-487-8944
www.sterling-eng-suz.com

DRAWN BY:	GFS	MSD P# - N/A
CHECKED BY:	JAH	DATE: JUNE 24, 2024
JOB NO.:	20-09-327	HARVEST AT HOPEWELL

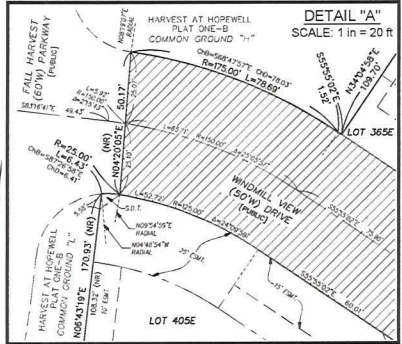
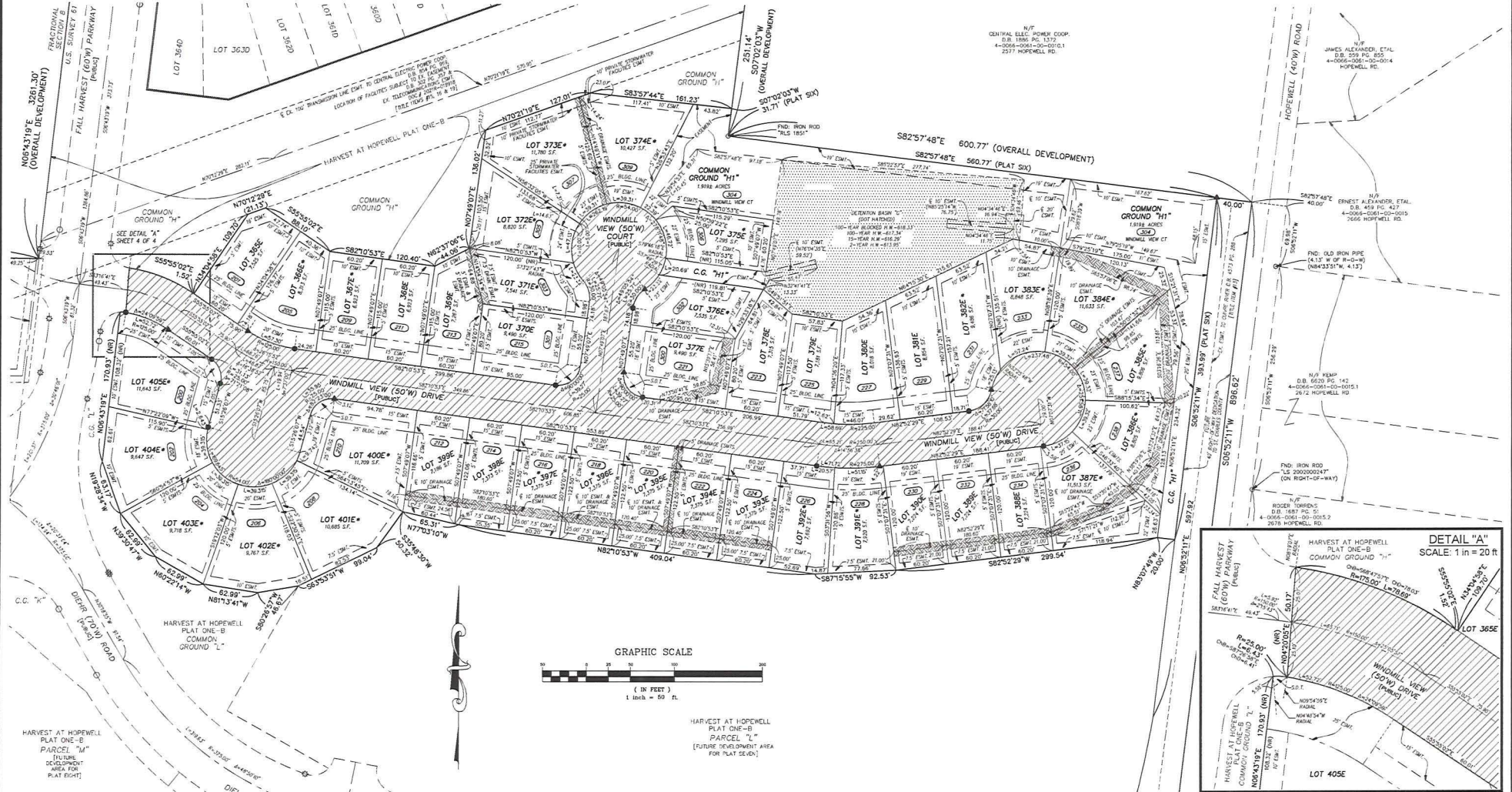
Drawing name: V:\2023\27 Highway N Assembly\Drawings\Surveying\Records\27HwyN.dwg Plotted on: Jun 24, 2024 - 2:40pm Plotted by: gorman

SURVEYOR'S CERTIFICATE:
SEE SHEET 1 OF 4 FOR CERTIFICATION.
THE STERLING COMPANY
MS REG. 357-Q

JIMMY A. HENSON, P.L.S., - VICE PRESIDENT DATE
MS. REG. L.S. #260717963

SHEET 3 OF 4

HARVEST AT HOPEWELL PLAT SIX



THE STERLING CO.
ENGINEERS & SURVEYORS
 5655 New Baumgartner Road
 St. Louis, Missouri 63129
 Ph. 314-487-0440 Fax 314-487-8944
 www.sterlingengr.com

DRAWN BY:	GFS	MSD P# - N/A
CHECKED BY:	JAH	DATE: JUNE 24, 2024
JOB NO.:	20-09-327	HARVEST AT HOPEWELL

KEY MAP
 SCALE 1 in = 1,500 ft

ABBREVIATION LEGEND:

- BLK. = BLOCK
- BLDG. = BUILDING
- C.O. = COMMON GROUND
- C.D. = CHORD DISTANCE
- D.B. = DEED BOOK
- DIAM. = DIAMETER
- ENT. = EASEMENT
- FO. = FOUND
- FORM. = FORMERLY
- IMP. = IMPROVEMENT
- NON-R. = NON-RESIDENTIAL
- P.B. = PLAT BOOK
- P.B. = POINT OF BEGINNING
- P.C. = POINT OF COMMENCEMENT
- P.R. = PRIVATE RIGHT-OF-WAY
- P.S. = PRIVATE SIDEWALK EASEMENT
- PL. = PLAT
- PL. = PLAT
- REG. = RECORD

ABBREVIATION LEGEND:

- R.O.W. = RIGHT-OF-WAY
- SURV. = SURVEY
- S.D.T. = SIGHT DISTANCE TRIANGLE
- S.F. = SQUARE FEET
- T.S.C.L. = TEMPORARY SLOPE AND CONSTRUCTION LICENSE
- W. = WIDTH

SYMBOL LEGEND:

- ▲ = SET PERMANENT MONUMENT IN ACCORDANCE WITH MISSOURI STANDARDS FOR LAND IN ALUMINUM CAP.
- = SET SEMI-PERMANENT MONUMENT IN ACCORDANCE WITH MISSOURI STANDARDS (1 1/2" DIAM W PLASTIC CAP OR CUT CROSS).
- = SET PERMANENT MONUMENT IN PREVIOUS PLAT.
- = SET SEMI-PERMANENT MONUMENT IN PREVIOUS PLAT.
- = FOUND PERMANENT MONUMENT
- = FOUND SEMI-PERMANENT MONUMENT
- ⊕ = FOUND CROSS
- ⊕ = FOUND ANCHOR
- ⊕ = BENCHMARK
- ⊕ = ADDRESS
- ⊕ = LOT SUBJECT TO STREET CREEP

HATCHING LEGEND:

- ▨ = PUBLIC RIGHT-OF-WAY
- ▨ = DRAINAGE EASEMENT
- ▨ = DETENTION BASIN

SURVEYOR'S CERTIFICATE:

SEE SHEET 1 OF 4 FOR CERTIFICATION.

THE STERLING COMPANY
 MOORE, V.P.

JANEY A. HENDON, P.L.S., VICE PRESIDENT
 MO. REG. L.S. #00075763

DATE: _____
 SHEET 4 OF 4

Drawing name: V:\000822\Highway\Assemble\Drawings\Surveying\record\0327\06.dwg Plotted on: Jun 24, 2024 - 2:40pm Plotted by: spmcm