

Sponsored by: Council Members Kuehn and Ottomeyer

AN ORDINANCE APPROVING THE RECORD PLAT OF MERCY – O’FALLON AND AUTHORIZING THE CITY CLERK TO ATTEST AND CERTIFY APPROVAL OF SAID PLAT.

WHEREAS, the record plat referenced herein has been reviewed by the City Engineer or his/her designee and determined to be complete as required by the ordinances of the City of O’Fallon; and

WHEREAS, the City Council has determined that the plat conforms closely to the preliminary plat as finally approved and to the provisions of the Subdivision Code and Zoning Code as required by Section 405.060 of the O’Fallon City Code;

NOW, THEREFORE, BE IT ORDAINED BY THE COUNCIL OF THE CITY OF O’FALLON, MISSOURI, AS FOLLOWS:

SECTION 1: The Record Plat of Mercy – O’Fallon, which property is located in the City of O’Fallon, Missouri, as prepared by Stock and Associates dated August of 2024 is hereby approved as submitted to the City Council.

SECTION 2: The City Clerk is hereby authorized to sign the record plat signifying approval by the City Council of said plat.

SECTION 3: No site improvements are accepted for maintenance by the City by the passage of this ordinance.

SECTION 4: This ordinance shall be in full force and effect from and after its passage and approval by the Mayor.

First Reading: September 12, 2024

Second Reading: September 12, 2024

PASSED BY THE CITY COUNCIL FOR THE CITY OF O’FALLON, MISSOURI, THIS 12TH DAY OF SEPTEMBER, 2024.



Bess Bacher

Presiding Officer

Attest:
Bess Bacher

Bess Bacher, City Clerk

APPROVED BY THE MAYOR FOR THE CITY OF O'FALLON, MISSOURI, THIS 12TH DAY OF SEPTEMBER, 2024.



Bill Hennessy

Bill Hennessy, Mayor

Attest:

Bess Bacher

Bess Bacher, City Clerk

Approved as to Form:
Kevin M. O'Keefe

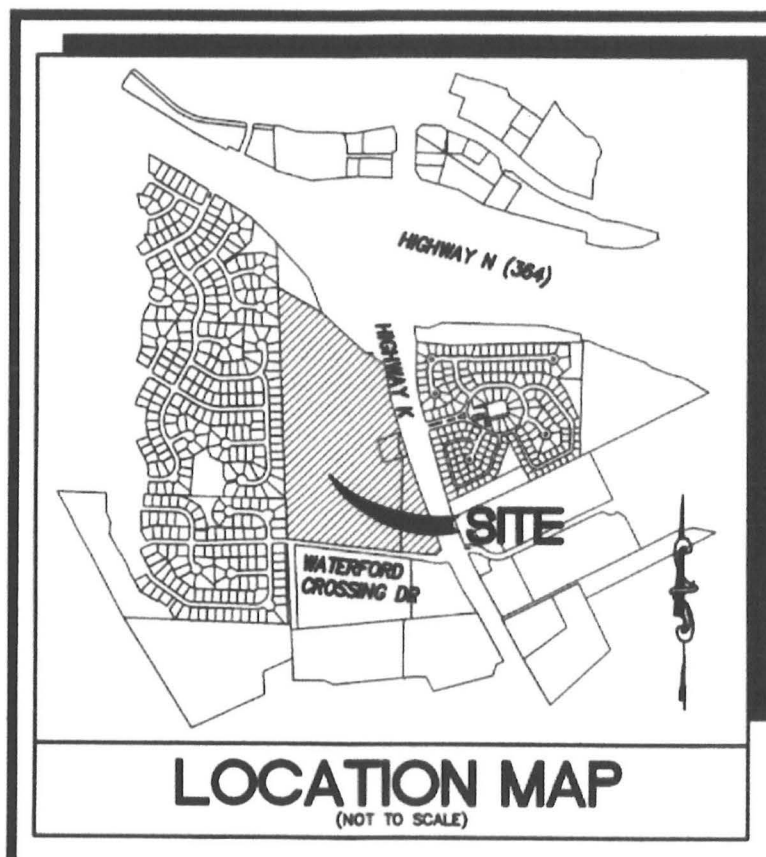
Kevin M. O'Keefe, City Attorney

Record Plat

MERCY OFALLON

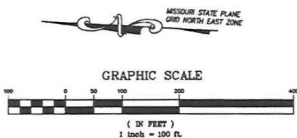
A Tract of Land Being Part of Lots 1 and 2 of Prairie Farms of The Anton Hoester Estates per SRB 6 PG 26 Located in U.S. Survey 3225, And Fractional Section 16, Township 46 North, Range 3 East of The 5th Principal Meridian,
City of O'Fallon
St. Charles County, Missouri

LOCATION MAP



RECORD PLAT

OF
A TRACT OF LAND BEING PART OF LOTS 1 AND 2 OF PRAIRIE FARMS OF
THE ANTON HOEBSTER ESTATES PER SRB 6 PG 26 LOCATED IN U.S. SURVEY 3225, AND
FRACTIONAL SECTION 16, TOWNSHIP 46 NORTH, RANGE 3 EAST OF THE 5TH PRINCIPAL MERIDIAN,
CITY OF O'FALLON, ST. CHARLES COUNTY, MISSOURI



MODOT NETWORK BENCHMARK

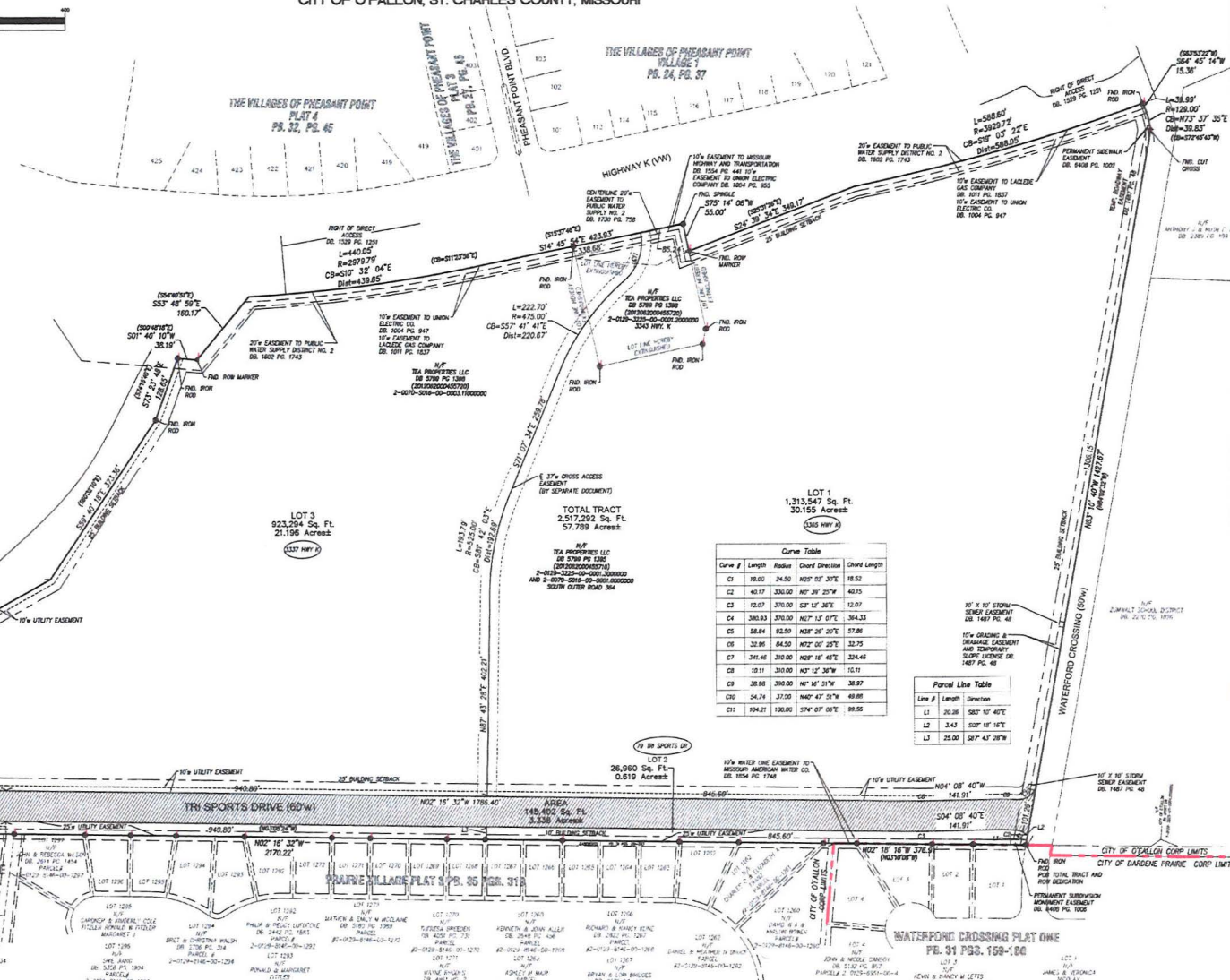
The bearings shown herein are grid bearings based on the Missouri Coordinate System of 1983, East Zone. Bearings were determined from project horizontal control points established in the project using Trimble GPS receivers utilizing real time kinematic GPS methods in reliance on the MODOT CNGS RTK Network operated by the Missouri Department of Transportation. Elevations are provided by the MODOT Network on the station of KANSAS.

LEGEND

- ⊕ BENCH MARK
- FOUND IRON PIP
- △ FOUND IRON PIPE
- RIGHT OF WAY MARKER

ABBREVIATIONS

- RD - ROAD
- FL - FURNACE
- FT - FEET
- ENG - ENGINE
- PL - PLATE
- PC - PAVEMENT
- RS - RAILROAD
- RS - RAILROAD
- RS - RAILROAD
- RS - RAILROAD
- RS - RAILROAD



Curve Table

Curve #	Length	Radius	Chord Direction	Chord Length
C1	15.00	24.00	N02° 07' 30"E	15.52
C2	40.17	330.00	N07° 20' 20"E	40.15
C3	12.07	370.00	S37° 14' 30"E	12.07
C4	380.83	370.00	N07° 15' 07"E	364.33
C5	58.84	92.50	N07° 20' 20"E	57.06
C6	32.86	84.50	N07° 07' 20"E	32.75
C7	347.48	310.00	N07° 18' 40"E	324.48
C8	191.11	310.00	N07° 12' 50"E	163.01
C9	38.98	310.00	N07° 12' 50"E	38.97
C10	94.74	37.00	N40° 47' 07"E	88.86
C11	104.21	100.00	S74° 07' 08"E	99.56

Point Line Table

Line #	Length	Bearing
L1	10.38	S02° 10' 40"E
L2	3.43	S02° 10' 40"E
L3	25.00	S07° 47' 18"E

PREPARED BY:
Stock & Associates
Consulting Engineers, Inc.
297 Charlestown Business Parkway
St. Louis, MO 63103
P: 314-437-1000
F: 314-437-1001
www.stockandassociates.com

RECORD PLAT
MERCY - O' FALLON
3343 HIGHWAY K AND SOUTH OUTER ROAD
CITY OF O'FALLON MISSOURI ST. CHARLES COUNTY MISSOURI



REVISIONS:
DRAWN BY: NHP
CHECKED BY: JHP
DATE: 04/03/2023
JOB NO: 211-883-2

PREPARED FOR:
TEA PROPERTIES LLC
645 MARVILLE CENTER DR
SUITE 100
ST. LOUIS MO 63141

RECORD PLAT
#1 of 2

