

ORDINANCE NO. 2018 6 - 4

BOROUGH OF RED LION
YORK COUNTY, PENNSYLVANIA

AN ORDINANCE OF THE BOROUGH OF RED LION, YORK COUNTY, PENNSYLVANIA, AMENDING THE ZONING ORDINANCE OF THE BOROUGH OF RED LION TO AMEND THE ZONING MAP OF THE BOROUGH OF RED LION TO REZONE PROPERTY LOCATED IN THE 700 BLOCK OF SOUTH MAIN STREET CURRENTLY ZONED RESIDENTIAL-OUTLYING (R-O) TO COMMERCIAL (C).

BE IT ENACTED AND ORDAINED, by the Council of the Borough of Red Lion, and it is hereby enacted and ordained, in lawful session assembled, that the Red Lion Borough Zoning Map is hereby amended as follows:

SECTION 1. The following change is hereby made to the zoning map of the Borough of Red Lion:

The area bounded on the south side by Grand Street, west side by South Main Street, north side by lands now or formerly of Sandra L. Shellenberger and east side by Lemon Lane is hereby rezoned from Residential-Outlying (R-O) to Commercial (C). This is identified as "Area A" on the enclosed Exhibit A.

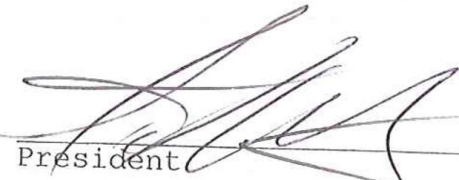
SECTION 2. This Ordinance shall become effective immediately upon enactment and approval.

Enacted and Ordained by the Council of the Borough of Red Lion, County of York, Pennsylvania, this 18th day of June, 2018.

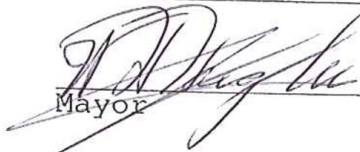
RED LION BOROUGH COUNCIL

Attest:

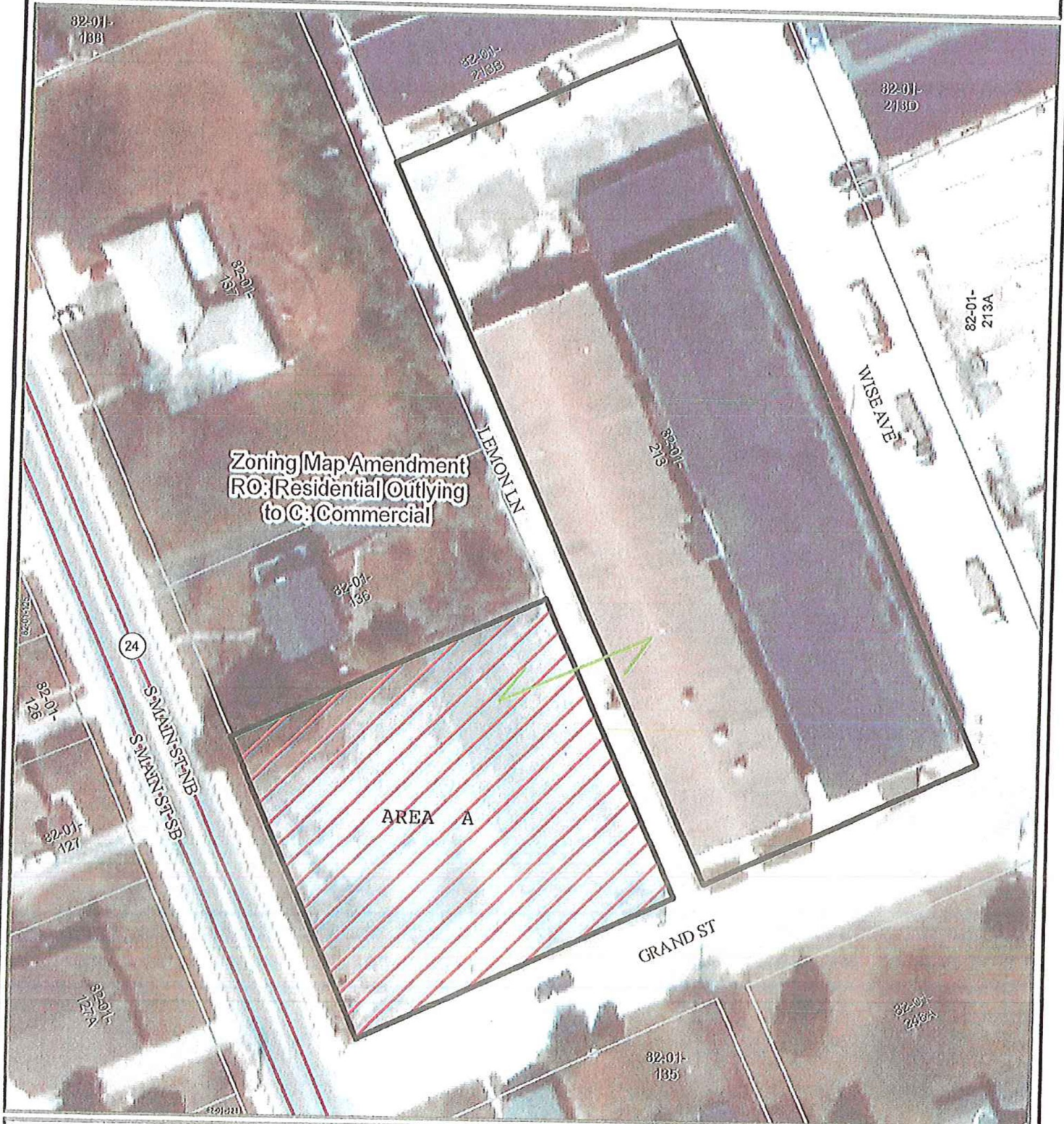

Secretary

BY: 
President

APPROVED/DISAPPROVED this 18th day of June, 2018.


Mayor

YCPC Project #18-016 - RED LION BOROUGH

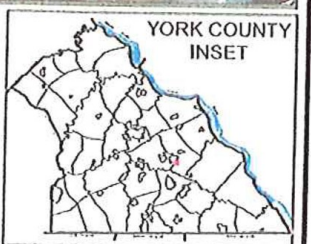


Zoning Map Amendment
 RO: Residential Outlying
 to C: Commercial

AREA A

Legend:

- Municipal Boundary
- Selected Parcel
- Parcels
- Land Join
- Proposed Area to be rezoned from RO to C



The York County Planning Commission provides this Geographic Information System map and/or data (collectively the "Data") as a public information service. The Data is not a legally recorded plan, survey, official tax map, engineering schematic and should be used for only general information. Reasonable effort has been made to ensure that the Data is correct; however, the Commission does not guarantee its accuracy, completeness, or timeliness. The Commission shall not be liable for any damages that may arise from the use of the Data.