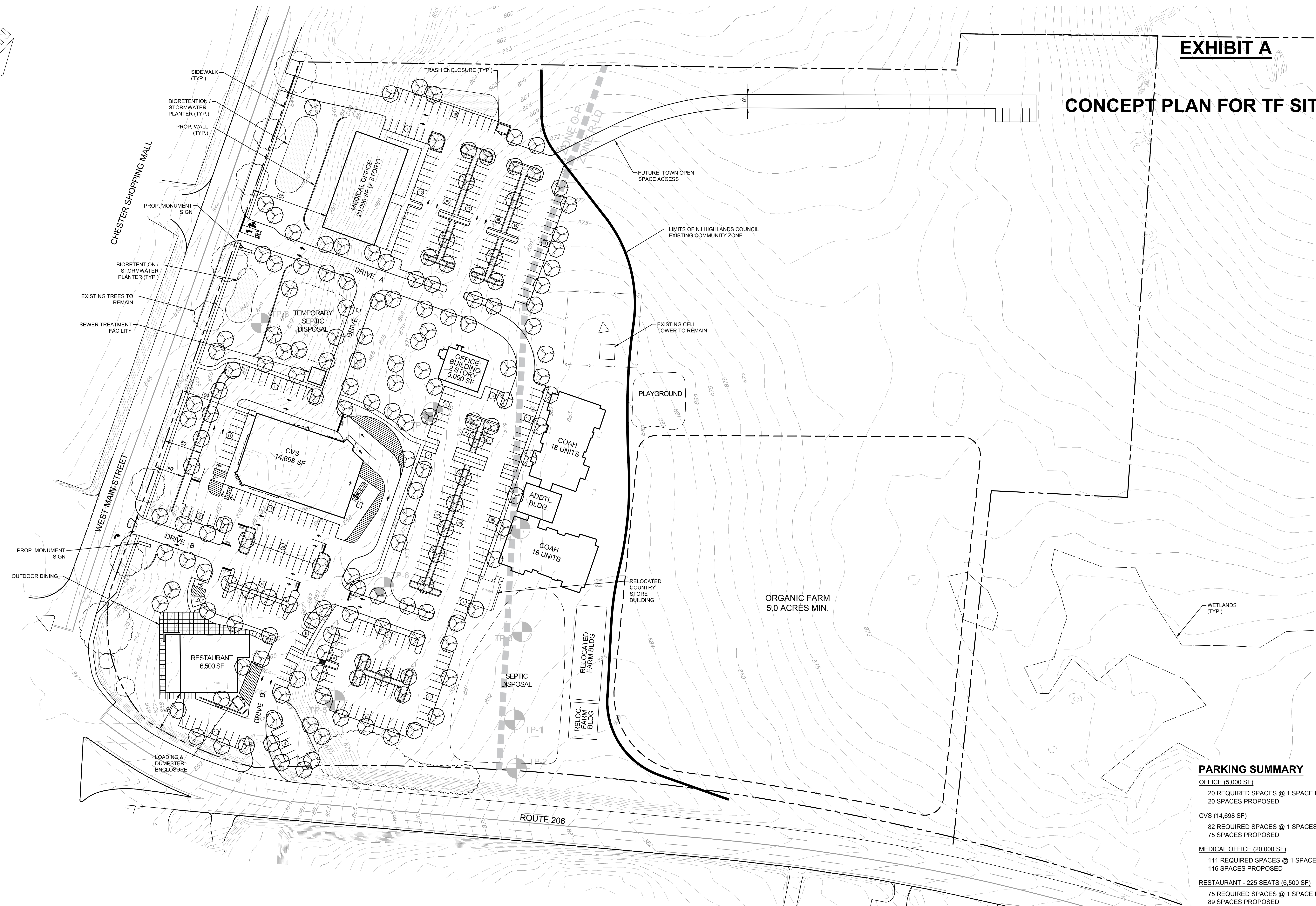


# EXHIBIT A

## CONCEPT PLAN FOR TF SITE

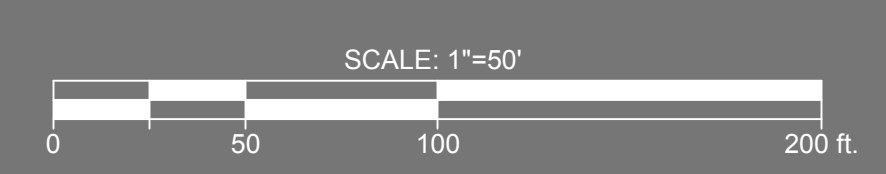


**PARKING SUMMARY**

<b>OFFICE (5,000 SF)</b>	20 REQUIRED SPACES @ 1 SPACE PER 250 SF
	20 SPACES PROPOSED
<b>CVS (14,698 SF)</b>	82 REQUIRED SPACES @ 1 SPACES PER 180 SF
	75 SPACES PROPOSED
<b>MEDICAL OFFICE (20,000 SF)</b>	111 REQUIRED SPACES @ 1 SPACE PER 180 SF
	116 SPACES PROPOSED
<b>RESTAURANT - 225 SEATS (6,500 SF)</b>	75 REQUIRED SPACES @ 1 SPACE PER 3 SEATS
	89 SPACES PROPOSED
<b>AFFORDABLE HOUSING - 36 UNITS (16,000 SF)</b>	72 REQUIRED SPACES @ 2 SPACES PER 1 UNIT
	72 SPACES PROPOSED

**REFERENCE:**  
 1. BASE INFORMATION TAKEN FROM MAP ENTITLED BOUNDARY & TOPOGRAPHIC SURVEY TURKEY FARM ACQUISITION, L.L.C. COUNTY ROUTE 513 & NJSH ROUTE 206 LOTS 7, 8, 9, 10, 10.01 & 11, BLOCK 1 BOROUGH OF CHESTER, MORRIS COUNTY STATE OF NEW JERSEY PREPARED BY CONTROL POINT ASSOCIATES, INC DATED 06-07-2001 REVISED THROUGH 06-10-04

DATE: 08/14/18  
 PROJ.: 080024-00-001



### LARISON'S CORNER CONCEPT 17.0

BLOCK 1 LOTS 9,10,10.01 & 11  
 BOROUGH OF CHESTER, MORRIS COUNTY, NEW JERSEY

