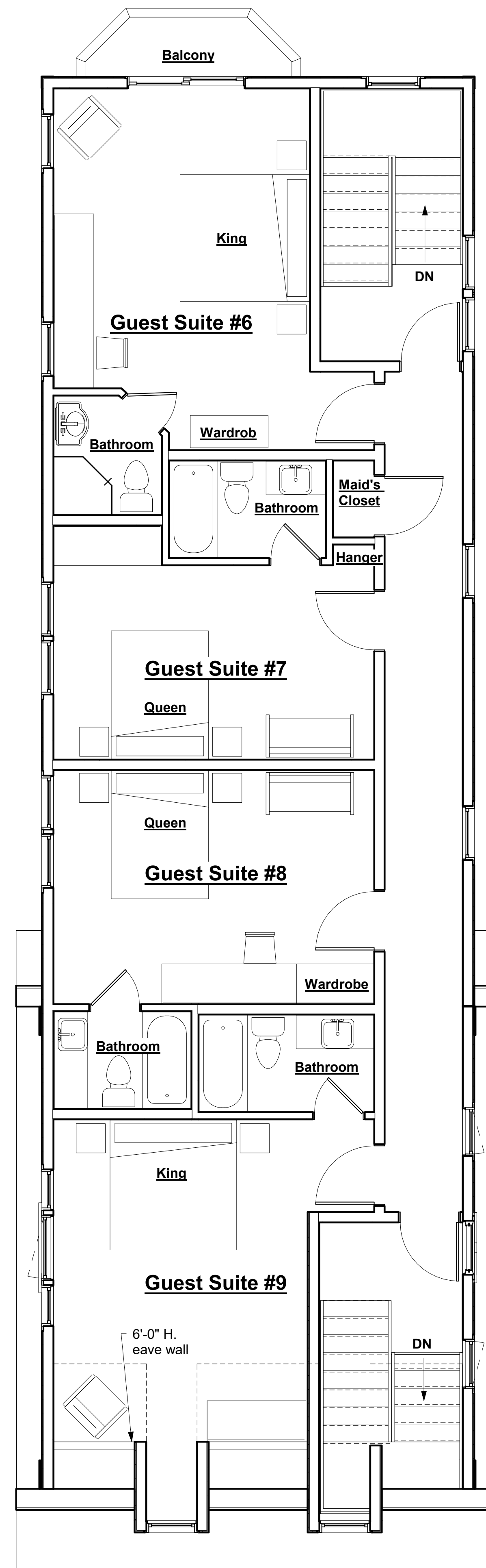
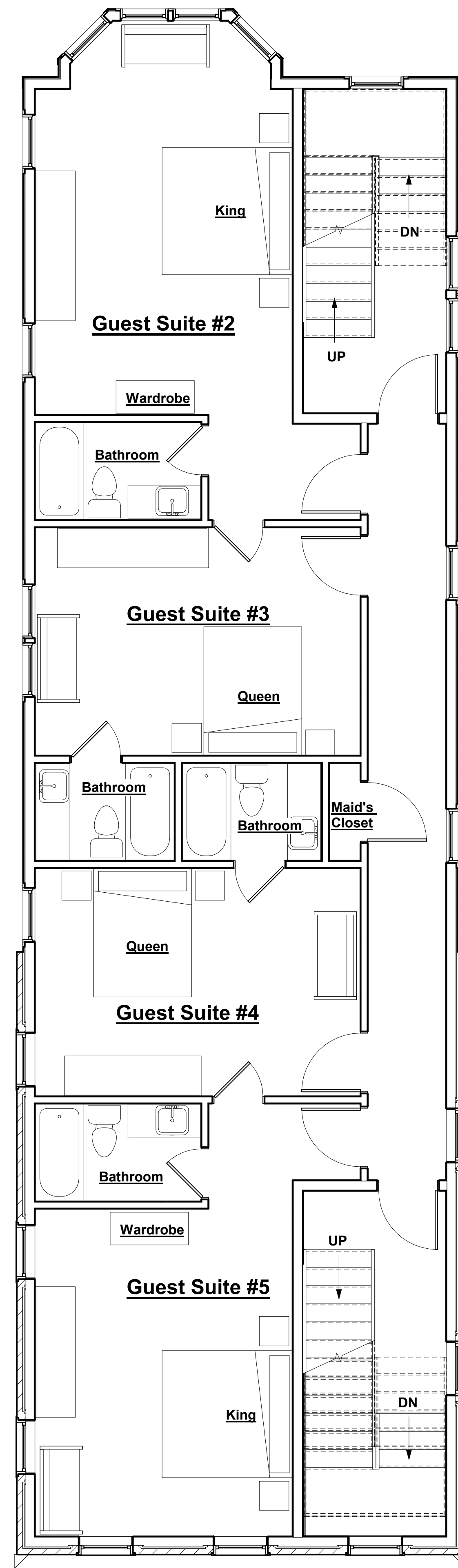


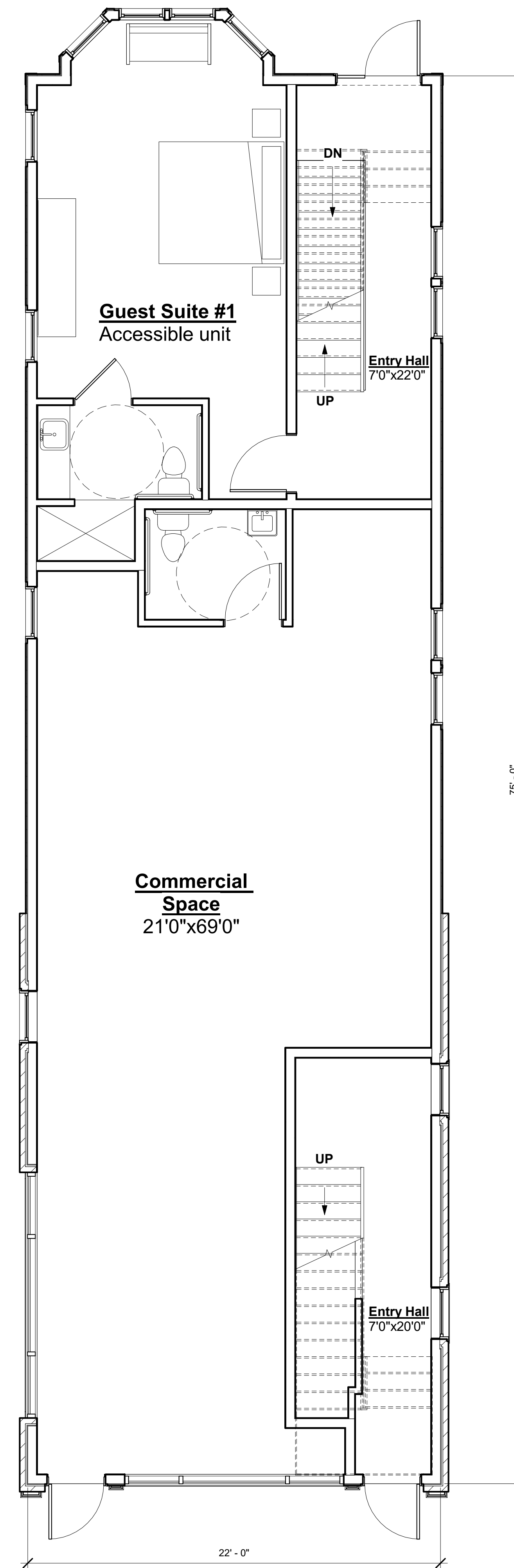
It is a violation of the New York State Education Law for anyone to alter this drawing or document in any way unless acting under the direction of a licensed architect, who shall then affix his seal, signature, date of alteration and specific description of any alteration made. Reproduction of this document in whole or in part is prohibited except with permission of the architect.



③ Third Floor  
1/4" = 1'-0"



② Second Floor Plan  
1/4" = 1'-0"



① First Floor Plan  
1/4" = 1'-0"

**Total Square Foot per floor:**

**First Floor: 1,677 s.f.**  
**Commercial Space: 900 s.f.**  
**Guest Suite #1: 340 s.f.**

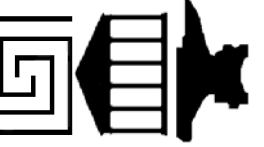
**Second Floor: 1,677 s.f.**  
**Guest Suite #2: 340 s.f.**  
**Guest Suite #3: 230 s.f.**  
**Guest Suite #4: 230 s.f.**  
**Guest Suite #5: 304 s.f.**

**Third Floor: 1,494 s.f.**  
**Guest Suite #6: 272 s.f.**  
**Guest Suite #7: 224 s.f.**  
**Guest Suite #8: 230 s.f.**  
**Guest Suite #9: 290 s.f.**

**Basement: 1,650 s.f.**

**Total Gross Square Footage: 6,498 g.s.f.**

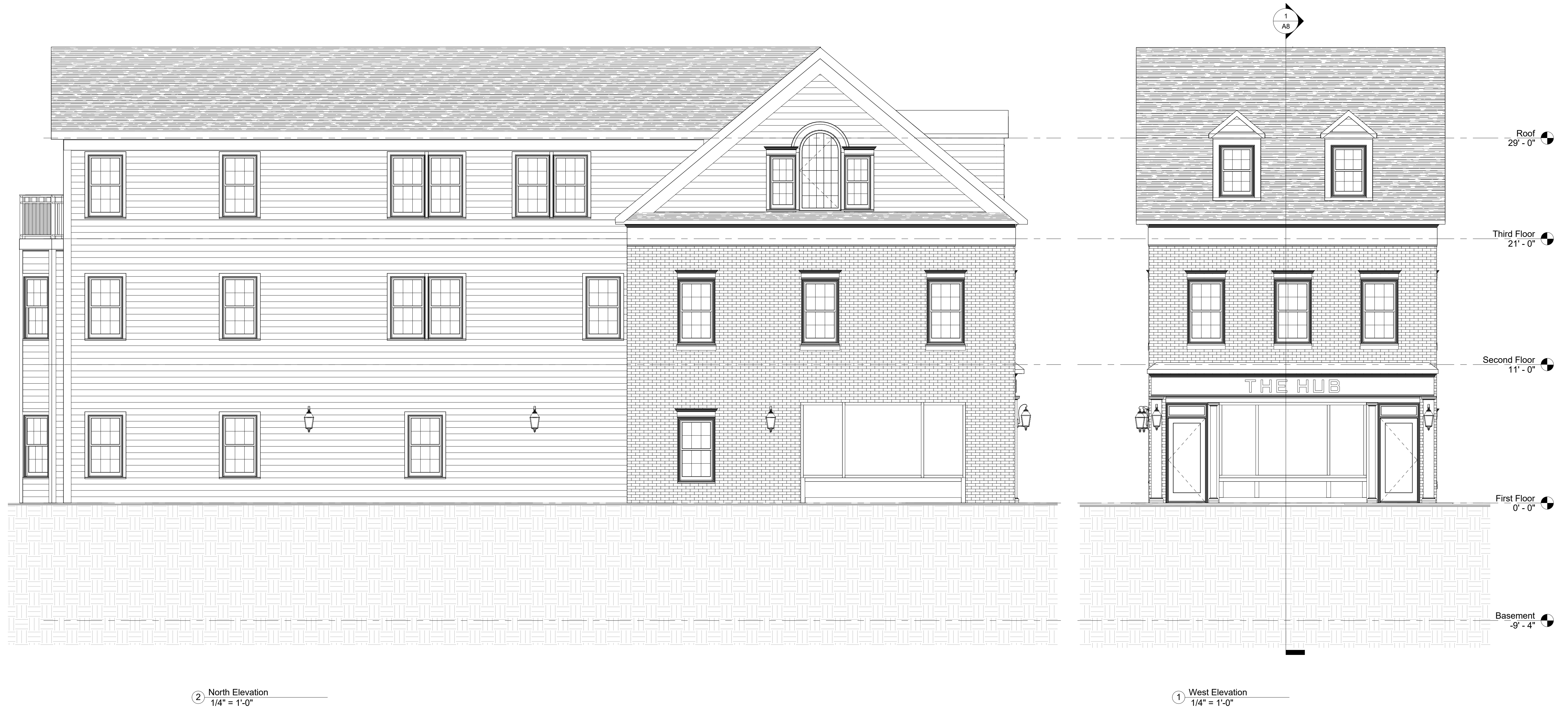
**WARREN TEMPLE SMITH ARCHITECTS, LLC**  
 65 Livingston Street, Rhinebeck, New York 12572(845)



PROJECT NO.	SCALE	BY	DATE	#	Revision Date	Revision Description
1904	1/4" = 1'-0"	SPR	1 June 2020			

Mixed Use Building  
 6376 Mill Street  
 Rhinebeck, NY  
 1st, 2nd, & 3rd, Floor Plans

It is a violation of the New York State Education Law for anyone to alter this drawing or document in any way unless acting under the direction of a licensed architect, who shall then affix his seal, signature, date of alteration and specific description of any alteration made. Reproduction of this document in whole or in part is prohibited except with permission of the architect.



② North Elevation  
1/4" = 1'-0"

① West Elevation  
1/4" = 1'-0"

**WARREN TEMPLE SMITH  
ARCHITECTS, LLC**  
65 Livingston Street, Rhinebeck, New York 12572(845)



PROJECT NO.	SCALE	BY	DATE	#	Revision Date	Revision Description
19004	1/4" = 1'-0"	SPR	1 June 2020			

Mixed Use Building  
6376 Mill Street  
Rhinebeck, NY  
W & N Elevations

It is a violation of the New York State Education Law for anyone to alter this drawing or document in any way unless acting under the direction of a licensed architect, who shall then affix his seal, signature, date of alteration and specific description of any alteration made. Reproduction of this document in whole or in part is prohibited except with permission of the architect.



② South Elevation  
1/4" = 1'-0"

① East Elevation  
1/4" = 1'-0"

**WARREN TEMPLE SMITH  
ARCHITECTS, LLC**  
65 Livingston Street, Rhinebeck, New York 12572(845)



PROJECT NO.	SCALE	BY	DATE	#	Revision Date	Revision Description
19004	1/4" = 1'-0"	SPR	1 June 2020			

Mixed Use Building  
6376 Mill Street  
Rhinebeck, NY  
E & S Elevations

A7

It is a violation of the New York State Education Law for anyone to alter this drawing or document in any way unless acting under the direction of a licensed architect, who shall then affix his seal, signature, date of alteration and specific description of any alteration made. Reproduction of this document in whole or in part is prohibited except with permission of the architect.



1 Section 1  
1/4" = 1'-0"

**WARREN TEMPLE SMITH ARCHITECTS, LLC**  
65 Livingston Street, Rhinebeck, New York 12572(845)



PROJECT NO.	SCALE	BY	DATE	#	Revision Description	Revision Date
19004	1/4" = 1'-0"	SPR	1 June 2020			

Mixed Use Building  
6376 Mill Street  
Rhinebeck, NY  
Building Sections



**WARREN TEMPLE SMITH  
ARCHITECTS, LLC**

65 Livingston St. Rhinebeck, NY (845)  
www.WarrenTempleSmit

## Mixed Use Building

6376 Mill Street  
Rhinebeck, NY

Perspective 1

PROJECT: 1904

DRAWN BY: SPR

DATE: 1 June 2020

**P1**



**WARREN TEMPLE SMITH  
ARCHITECTS, LLC**

65 Livingston St. Rhinebeck, NY (845)  
www.WarrenTempleSmit

## Mixed Use Building

6376 Mill Street  
Rhinebeck, NY

Perspective 2

PROJECT: 1904

DRAWN BY: SPR

DATE: 1 June 2020

**P2**