

**AN ORDINANCE AMENDING SECTION 405.050  
“DEFINITIONS AND INTERPRETATION” OF THE  
MUNICIPAL CODE OF THE CITY OF WARRENTON,  
MISSOURI**

BE IT ORDAINED BY THE BOARD OF ALDERMEN OF THE CITY OF WARRENTON, MISSOURI, AS FOLLOWS:

SECTION I. That Section 405.050, of the Municipal Code of the City of Warrenton, Missouri pertaining to “Definitions and Interpretation” is hereby amended with the addition of the following definition:

**SITE DISTANCE AREA** -On a corner lot in any district, nothing shall be erected, placed, planted, or allowed to grow in such a manner as to materially impede the vision of vehicular traffic within the required Site Distance Area per Section 405.050, Drawing ST-1.

SECTION II. Section 405.050, of the Municipal Code of the City of Warrenton, Missouri pertaining to “Definitions and Interpretation” is hereby amended by deleting the following definitions in their entirety and inserting the following in lieu of:

**DWELLING, SINGLE-FAMILY, ATTACHED** -A single-family dwelling that is attached to one (1) or more other one-family dwellings by a common vertical wall.

**PARKING SPACE** - Space within a public or private parking area of not less than one hundred seventy one (171) square feet (nine (9) feet by nineteen (19) feet, exclusive of access drives, aisles, ramps, columns or office and work areas, for the storage of passenger automobile or a commercial vehicle under one and one-half (1½) tons capacity and connected with a street or alley by a surfaced driveway which affords satisfactory ingress and egress for such vehicles.

SECTION III. Section 405.050, of the Municipal Code of the City of Warrenton, Missouri pertaining to “Definitions and Interpretation” is hereby amended by deleting “RESIDENTIAL MEAL SERVICE” in its entirety:

**RESIDENTIAL MEAL SERVICE** -An eating establishment located within a residence where public dining is by reservation, no off-street parking is required and the establishment is owned and managed by the residents therein.

SECTION IV. All ordinances or parts of ordinances in conflict with this Ordinance are hereby repealed.

SECTION V. This Ordinance shall take effect and be in full force from and after the passage and approval thereof.

READ TWO TIMES AND PASSED by the Board of Aldermen of the City of Warrenton, Missouri, this 15<sup>th</sup> day of September, 2015.

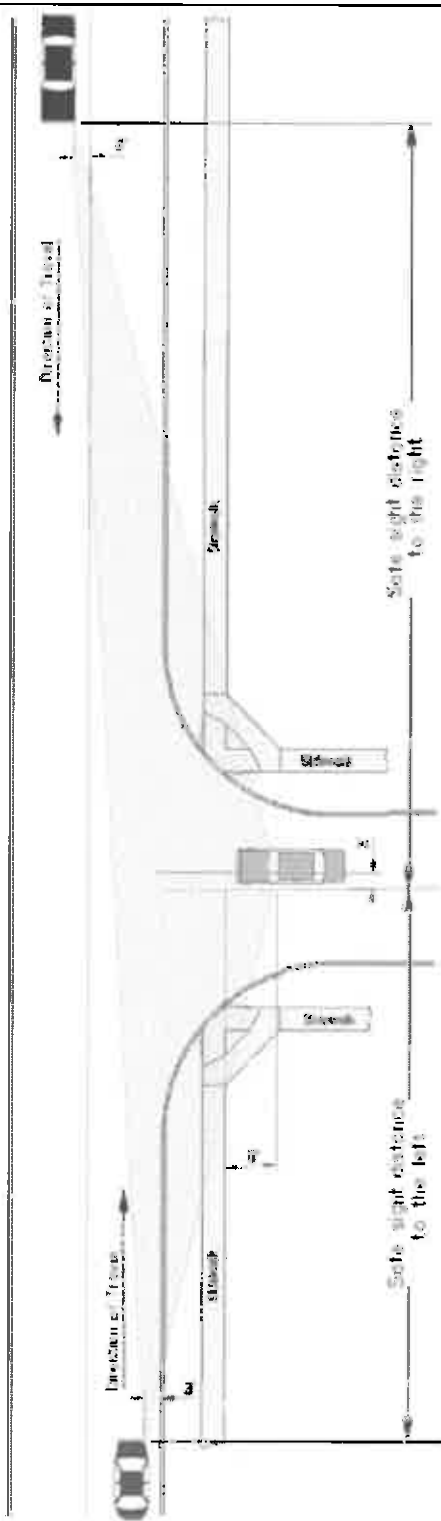
  
\_\_\_\_\_  
President of the Board of Aldermen

APPROVED BY THE MAYOR of the City of Warrenton, Missouri, this 15<sup>th</sup> day of September, 2015.

  
\_\_\_\_\_  
Mayor

ATTEST:

  
\_\_\_\_\_  
City Clerk



Design Speed (MPH)	Minimum Sight Distance (Feet) *
25	280
30	353
35	415
40	470
45	530
50	590
55	645
60	705

\* Distance measured from an entering driver's eye position to the position of the closest approaching vehicle for front sight.

The entering driver's eye position shall be assumed 4 feet to the right of the entering vehicle's centerline, 5.5 feet above the pavement surface, and 3 feet to the nearest pedestrian crosswalk line (marked or unmarked) on the street being crossed.

The position of the closest Approaching vehicle's far front corner shall be assumed 4 feet from the edge of the nearest approaching vehicle lane and 4.5 feet above the pavement surface in each direction travel.

NOTE:  
For Street Approach Only, The City May require an Engineer's Report For Sight Distance Requirements (See 411) (SEE APPROPRIATE CONNECTION TO OTHER SPECIFICATIONS)

### INTERSECTION SIGHT DISTANCE

Approval Date:

Rev. No. 0

CITY OF WARRENTON, MISSOURI

FORM NO. 31-1