

**AN ORDINANCE ACCEPTING PLAT OF THE SUBDIVISION KNOWN AS
"SUNNY DAY SUBDIVISION" BY THE CITY OF WARRENTON,
MISSOURI**

WHEREAS, an application has been filed by Keith Runge for approval of the record plat of Sunny Day Subdivision located at 275 Pinckney Street.

WHEREAS, the Planning and Zoning Commission, at their meeting of August 4, 2016 recommended approval of the record plat of Sunny Day Subdivision; and

WHEREAS, on August 16, 2016 the Board of Aldermen of the City of Warrenton accepted the recommendation of the Planning and Zoning Commission to approve the record plat of Sunny Day Subdivision with the condition to include waiving the submission and/or approval of the Stormwater Management Plan at this time.

NOW, THEREFORE, BE IT ORDAINED BY THE BOARD OF ALDERMEN OF THE CITY OF WARRENTON, MISSOURI, AS FOLLOWS:

SECTION I. The plat attached hereto and made a part hereof to the land described therein, having been submitted to the Board of Aldermen for approval as a subdivision, is hereby approved and accepted by the City as a subdivision.

SECTION II. The President of the Board of Aldermen and City Clerk of the City of Warrenton are hereby directed to execute said Plat.

SECTION III. All ordinances or parts of ordinances in conflict with this Ordinance are hereby repealed.


SECTION IV. This Ordinance shall take effect and be in full force from and after the passage and approval thereof.

READ TWO TIMES AND PASSED by the Board of Aldermen of the City of Warrenton, Missouri, this 16th day of August, 2016.



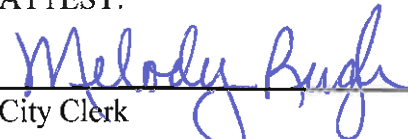
President of the Board of Aldermen

APPROVED BY THE MAYOR of the City of Warrenton, Missouri, this 16th day of August, 2016.



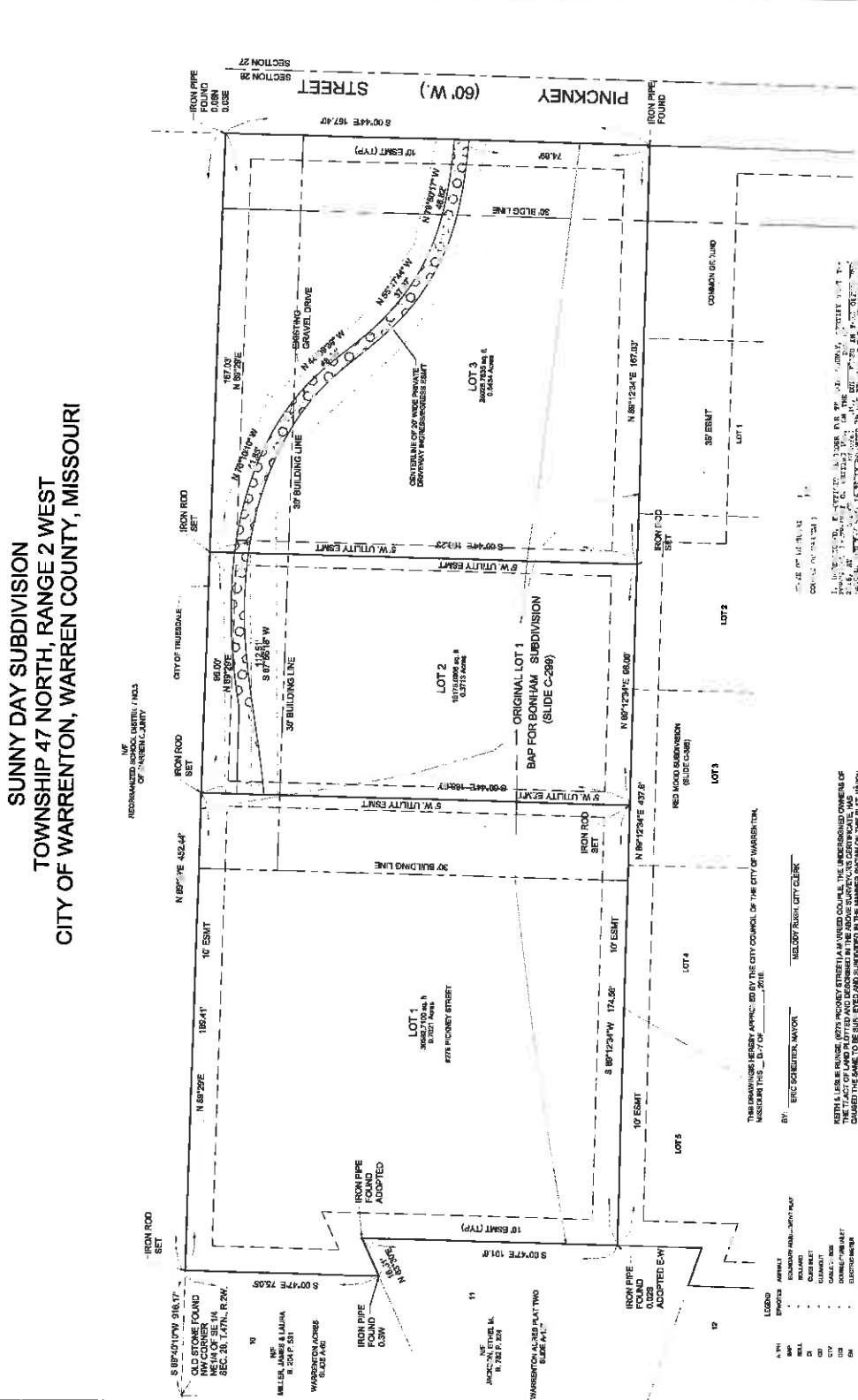
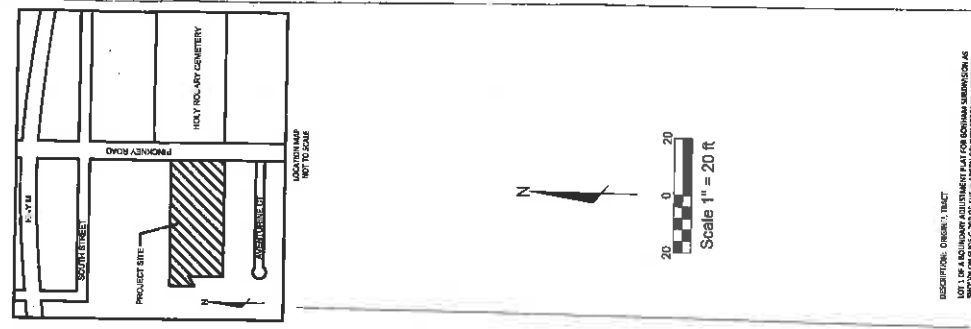
Mayor

ATTEST:



City Clerk

SUNNY DAY SUBDIVISION TOWNSHIP 47 NORTH, RANGE 2 WEST CITY OF WARRENTON, WARREN COUNTY, MISSOURI



RECOMMENDED FOR THE CITY OF WARRENTON, MISSOURI

DESCRIPTION: ORIGINAL PLAT
LOT 1 OF A FOUR-LAND ACQUISITION PLAT FOR COMMON SUBDIVISION AS SHOWN ON SLIDE C-288 OF THE WARREN COUNTY RECORDS, WARRENTON.

NOTES:
ELEVATIONS ARE ESTABLISHED PER STATE PLANE COORDINATES.

TO: KEITH A. LESLIE, ENGINEER
303 WOOD STREET
WARRENTON, MISSOURI 63424-2851
7-2-2-2014

FOR: KEITH RUNGE
275 PICKNEY STREET
WARRENTON, MISSOURI 63483
TEL: 314-223-9019

DATE: 5-30-15
DRAWN BY: [Signature]
CHECKED BY: [Signature]

1 OF 1

LEGEND:
 A-1: 1" = 20' SCALE
 B-1: 1" = 20' SCALE
 C-1: 1" = 20' SCALE
 D-1: 1" = 20' SCALE
 E-1: 1" = 20' SCALE
 F-1: 1" = 20' SCALE
 G-1: 1" = 20' SCALE
 H-1: 1" = 20' SCALE
 I-1: 1" = 20' SCALE
 J-1: 1" = 20' SCALE
 K-1: 1" = 20' SCALE
 L-1: 1" = 20' SCALE
 M-1: 1" = 20' SCALE
 N-1: 1" = 20' SCALE
 O-1: 1" = 20' SCALE
 P-1: 1" = 20' SCALE
 Q-1: 1" = 20' SCALE
 R-1: 1" = 20' SCALE
 S-1: 1" = 20' SCALE
 T-1: 1" = 20' SCALE
 U-1: 1" = 20' SCALE
 V-1: 1" = 20' SCALE
 W-1: 1" = 20' SCALE
 X-1: 1" = 20' SCALE
 Y-1: 1" = 20' SCALE
 Z-1: 1" = 20' SCALE